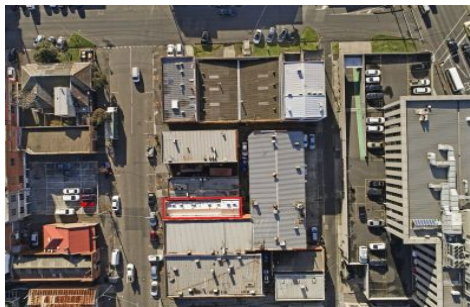




INNER REAL ESTATE

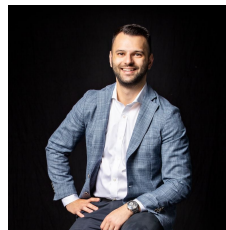
NEXTRE



43 Tope Street South Melbourne VIC

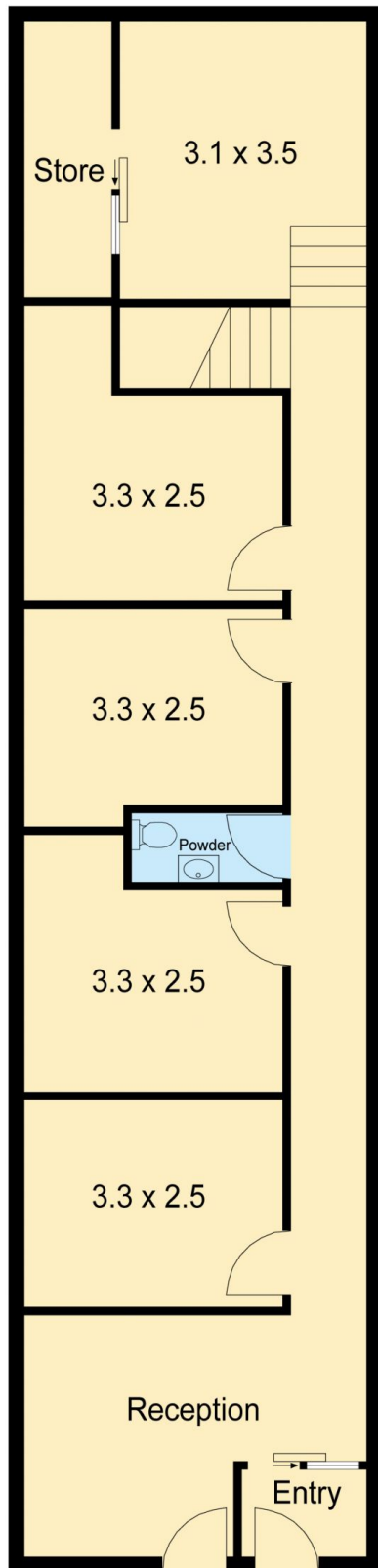
- * Superbly positioned city fringe location
- * Located within walking distance to CBD, South Melbourne shopping precinct, Crown Casino and easy access to Kings Way
- * Land area 106sqm
- * Zoned commercial 2
- * Suitable for owner occupiers, investors and developers (STCA)
- * Five bedrooms all with showers and two sitting areas

Building Size : 120 sqm
Land Size : 106 sqm
View : <https://www.innerrealestate.com.au/sale/vic/inner-city/south-melbourne/commercial/industrial/6136423>

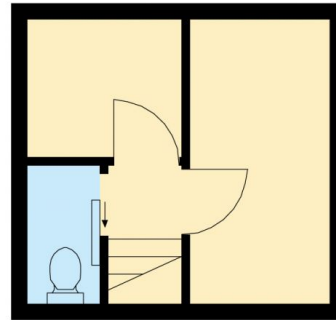


Anthony Cimino
+61 3 9804 5551

43 Tope Street, SOUTH MELBOURNE



Ground Floor



First Floor