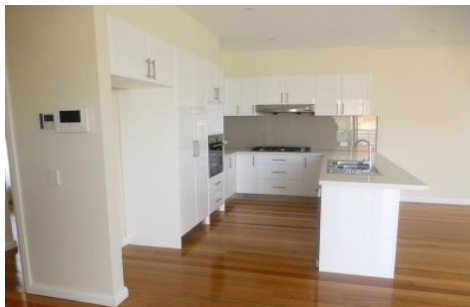




INNER REAL ESTATE NEXTRE



3/2 May Park Avenue Ashwood VIC

5 3 2

****ARRANGE AN INSPECTION TIME ONLINE - DETAILS BELOW****

This modern solid brick family home is sure to impress with its quality finishes and great size. Offering 5 light filled spacious bedrooms, of which 2 are master bedrooms with ensuites, a bright kitchen, with gas cook top, and quality stone benches.

The large open plan living area features polished timber floorboards, leading to a neat, low maintenance court yard.

Arranging an inspection is simple!

To book a time to inspect or register to attend, simply click on Book an Inspection Time or Email Agent to instantly book using our online system.

View : <https://www.innerrealestate.com.au/lease/vic/east/ashwood/residential/townhouse/6138087>



Izabella Frattezi Ramos
0418 511 885

<https://www.innerrealestate.com.au>