



INNER REAL ESTATE NEXTRE



205/39 Lonsdale Street Melbourne VIC

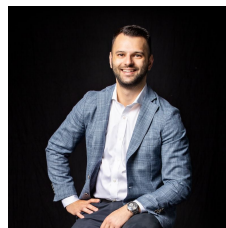
2 1

Positioned in the heart of Melbourne, this large two bedroom apartment features open plan living and dining area, full length balcony, BIR's, reverse cycling heating/cooling and modern appliances. Located in the heart of all the theatre and University precinct, restaurants, bars, cafes and Chinatown, this is the ideal apartment to invest in or owner occupy. Current rent return of \$25,032 P/A, 7%+

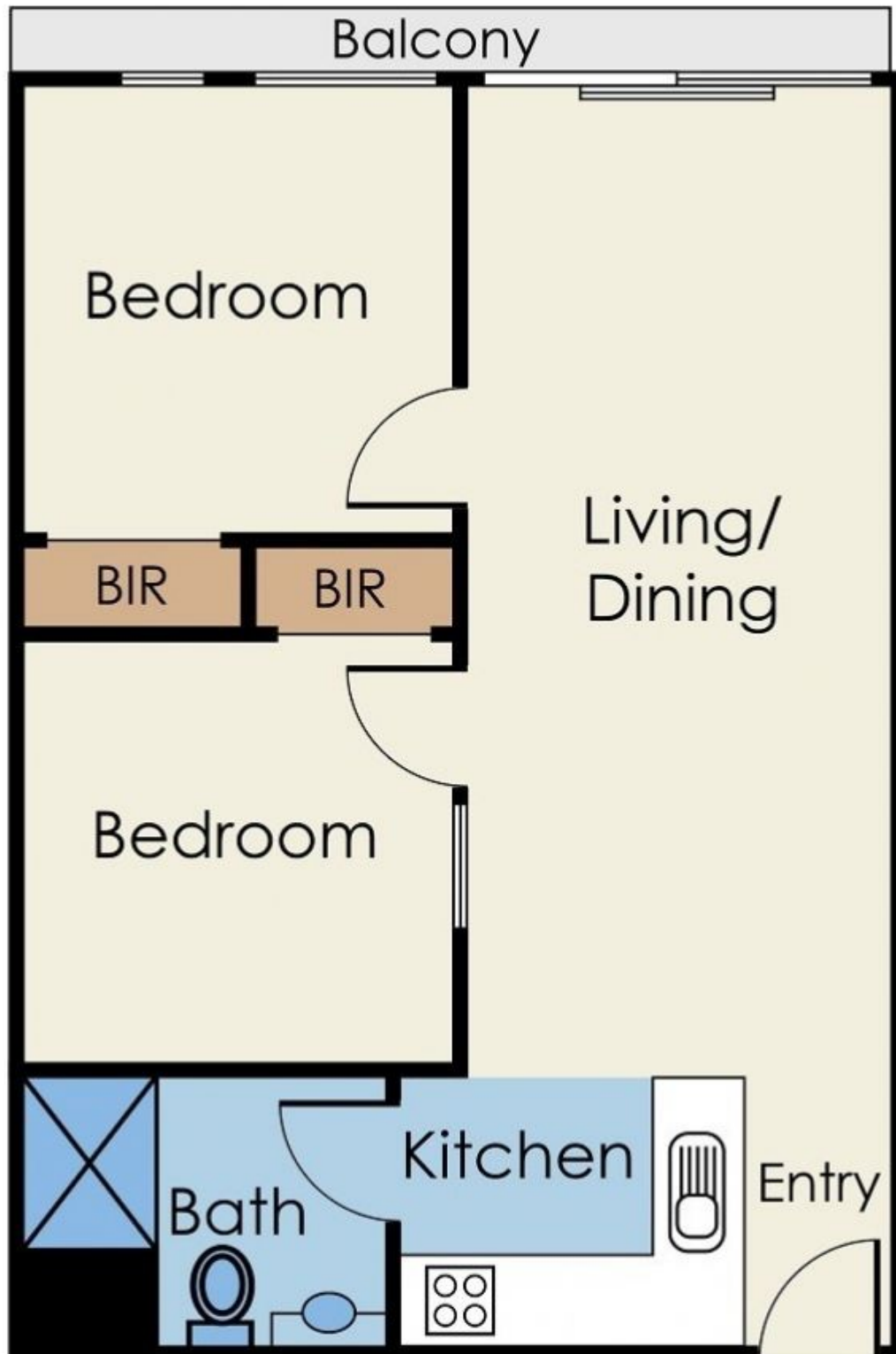
Onsite facilities include: IGA supermarket, common area with widescreen T.V, lounges and communal laundry.

Price : \$ 325,000

View : <https://www.innerrealestate.com.au/sale/vic/inner-city/melbourne/residential/apartment/6138387>



Anthony Cimino
+61 3 9804 5551



Not to Scale

Every care has been taken to verify the accuracy of details in this brochure. Prospective purchasers are requested to take such action as is necessary to satisfy themselves of any pertinent matters