



1514/35 Albert Road Melbourne VIC

2 1 1

A sweeping view taking in Albert Park Lake and Port Phillip Bay is the centrepiece of this stunning 2 bedroom apartment high up in the striking Emerald Building.

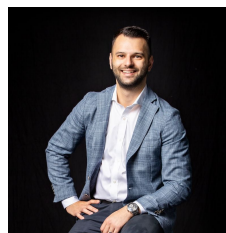
This is cosmopolitan living at its best in one of Melbourne's most desirable locations - walk to the Tan Track, Royal Botanic Gardens and Albert Park Lake, stroll to restaurants and cafes and relax on a luxurious rooftop terrace complete with heated spa (with city and lake views!) and barbecue area, perfect for gatherings with family and friends.

The city skyline is your backdrop, St Kilda Road tram stops are paces away and you are spoilt for choice with the arts precinct, South Melbourne Market and the iconic Melbourne Sports and Aquatic Centre all within a 1.5km radius.

The contemporary apartment is light, bright and presents as new. It features 2 spacious bedrooms with built-in-robos, a sleek stone kitchen with stainless steel appliances, a gas

**Price** : \$ 620,000

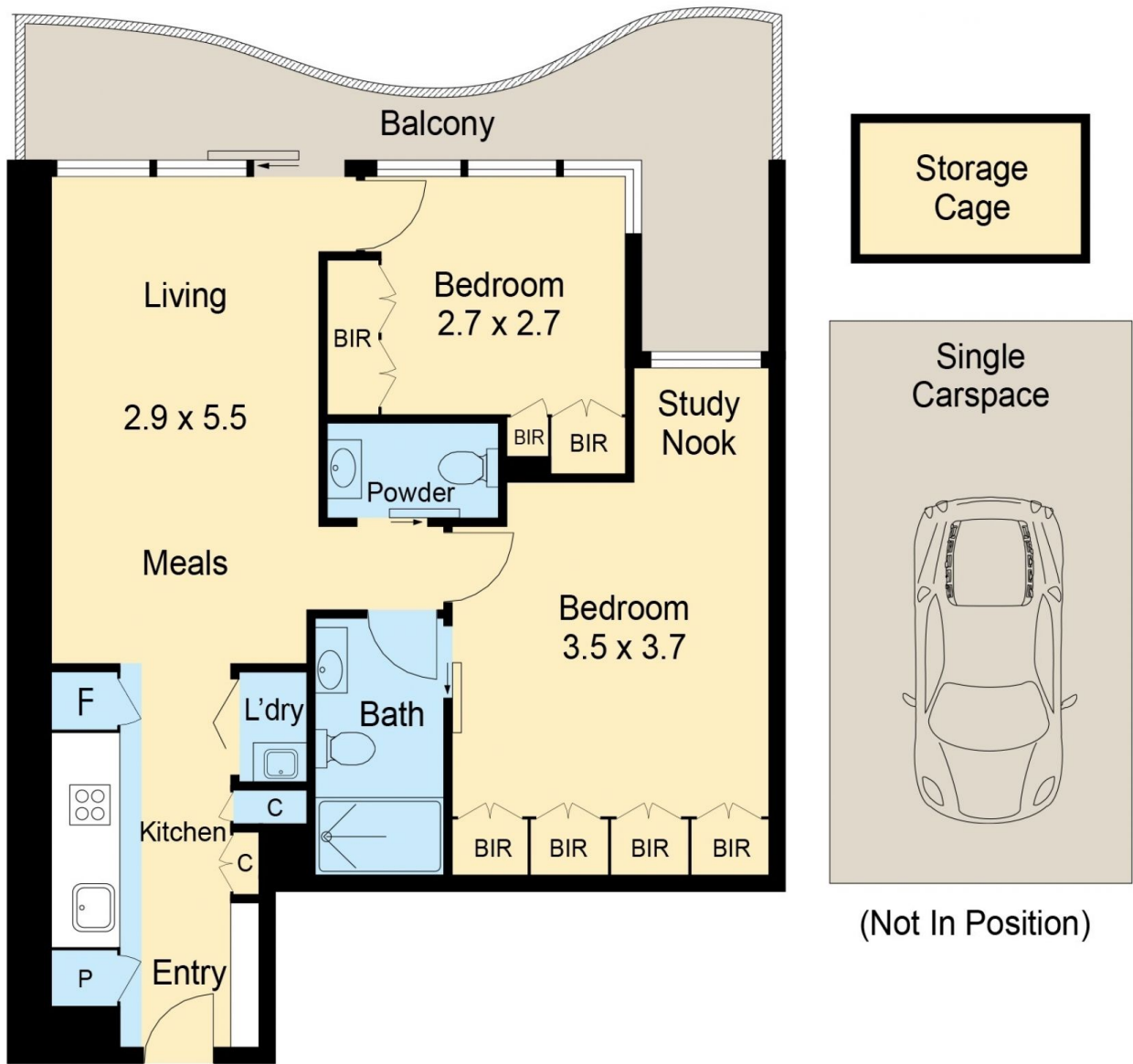
**View** : <https://www.innerrealestate.com.au/sale/vic/inner-city/melbourne/residential/apartment/6138402>



**Anthony Cimino**  
+61 3 9804 5551



**Joe Cimino**



ALL INFORMATION CONTAINED HERE IN IS GATHERED FROM SOURCES WE BELIEVE TO BE RELIABLE. HOWEVER WE CANNOT GUARANTEE ITS ACCURACY AND INTERESTED PERSONS SHOULD RELY ON THEIR OWN ENQUIRES. DIMENSIONS ARE APPROXIMATE.