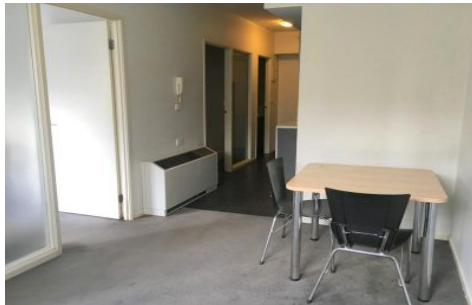
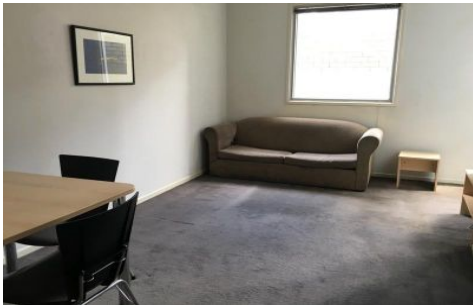




INNER REAL ESTATE NEXTRE



807/39 Lonsdale Street Melbourne VIC

2  1 

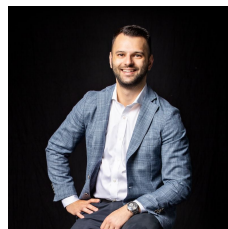
Asking Price \$279,000

View : <https://www.innerrealestate.com.au/sale/vic/inner-city/melbourne/residential/apartment/6138406>

Positioned in the heart of Melbourne, this two bedroom apartment features open plan living and dining area, BIR's, reverse cycling heating/cooling and modern appliances. Located in the heart of all the theatre precinct, restaurants, bars, cafes and Chinatown, this is the ideal apartment to invest in or owner occupy.

Current rental \$460 per week. 6.5% Net Return

Onsite facilities include: IGA supermarket, common area with table tennis facilities, widescreen T.V, lounges and communal laundry.



Anthony Cimino
+61 3 9804 5551

