



**808/380 Little Lonsdale Street Melbourne VIC**

1 1

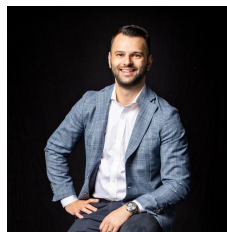
Located in the heart of one of the world's most liveable cities, the La Banque apartment building is synonymous with sophisticated, cosmopolitan living and this is your chance to capture a slice of it.

This 1-bedroom apartment presents an exciting opportunity in this prestigious residential building with its blue-ribbon CBD address on Little Lonsdale Street. Sweeping, elevated city views are yours by day and night from the full-length covered balcony and from the open-plan living space.

Stroll to Flagstaff Station, trams, Emporium Melbourne and a myriad of universities by foot, including La Trobe University, Charles Sturt University, Monash University and more.

Shopping, education, entertainment, relaxation, sport, and transport - it's all at your fingertips. Summers here are spent relaxing on the lawns of Flagstaff Gardens just 200m away after ambling through the iconic Queen Victoria

**View** : <https://www.innerrealestate.com.au/sale/vic/inner-city/melbourne/residential/apartment/6138410>



**Anthony Cimino**  
**+61 3 9804 5551**

