



INNER REAL ESTATE NEXTRE



1704/58 Clarke Street Southbank VIC

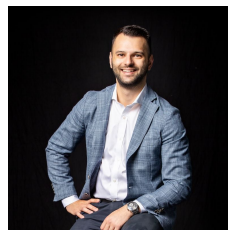
2  1  1 

Contemporary design meets urban chic in Southbank's innovative 'Habitat' building and this 17th floor apartment with a panoramic bay vista commands attention within it.

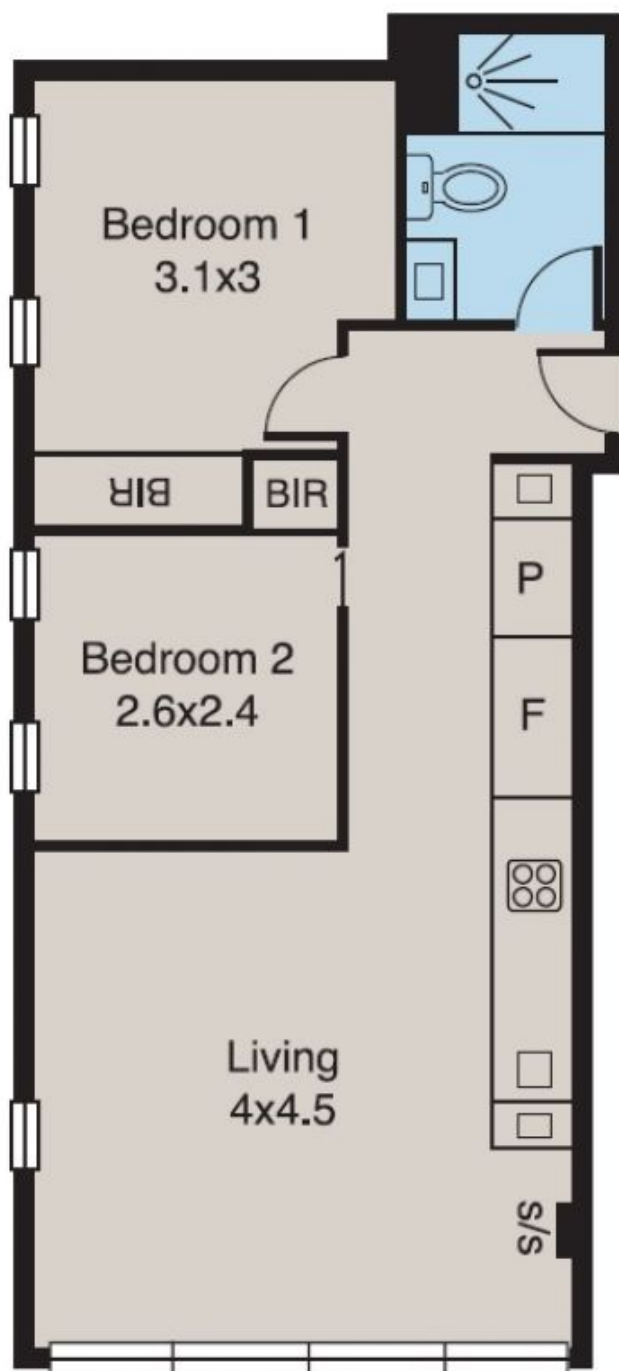
The 2-bedroom, 1-bathroom apartment with a secure car space is a superb offering, featuring floor-to-ceiling double glazed windows framing a magnificent elevated view over South Melbourne to Port Phillip Bay.

Located in the heart of Melbourne's cultural precinct, a whisper from South Melbourne Market, Crown Entertainment Complex, waterside dining, bars, shopping and more, this is both an owner-occupier's lifestyle base and an undeniably stylish inner-city investment opportunity. Award-winning architects Rothelowman have designed 'Habitat' with community-style living in mind. Relax with friends in the communal rooftop terrace garden and gather to watch the big games in the cinema room. Entertain in the function room with a fully equipped kitchen and retreat to

Price : \$ 459,000
Building Size : 47 sqm
View : <https://www.innerrealestate.com.au/sale/vic/inner-city/southbank/residential/apartment/6138411>



Anthony Cimino
+61 3 9804 5551



Single
Car Space
(Not in Position)