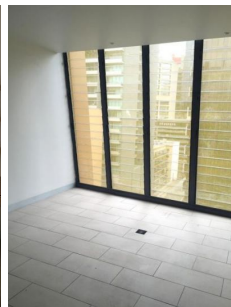
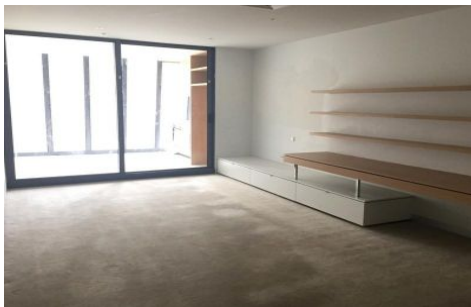




INNER REAL ESTATE NEXTRE



1213/555 Flinders Street Melbourne VIC

1 1

****ARRANGE AN INSPECTION TIME ONLINE - DETAILS BELOW****

View : <https://www.innerrealestate.com.au/lease/vic/inner-city/melbourne/residential/apartment/6138420>

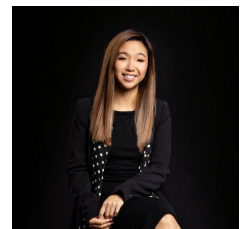
This beautifully presented apartment is positioned in Northbank Place high on the 21st floor and offers a winter garden kitchen with stainless steel stovetop, oven and dishwasher. The open plan spacious lounge offering a built in entertainment unit. Other features include security video intercom, modern bathroom and euro style laundry. Northbank Place is conveniently located close to train stations, Crown Casino, restaurants and parkland.

Arranging an inspection is simple!

To book a time to inspect or register to attend, simply click on Book an Inspection Time or Email Agent to instantly book using our online system.



Izabella Frattezi Ramos
0418 511 885



Hayley Tran
+61 3 9804 5551

<https://www.innerrealestate.com.au>