



INNER REAL ESTATE NEXTRE



1211/568 St Kilda Road Melbourne VIC

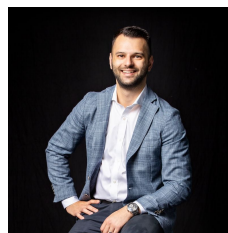
1 1 1

Situated in the landmark Karl Fender 'Rhapsody' building, this contemporary apartment has been designed with exposed concrete ceilings for a 'warehouse' feel. Comprising an entry hall leading to the well-appointed kitchen boasting stone benchtops, pantry and quality stainless steel appliances, open plan dining and lounge area with split-system leading off to the bedroom with built-in robe, split-system and balcony. A very chic bathroom with modern fixtures and fittings, European laundry, lift access, concierge, secure car parking and full gymnasium facilities completes this spectacular abode. Located on the fringe of the city, within walking distance to Albert Park Lake and Fawkner Park, plus the convenience of public transport on the doorstep, this apartment is an amazing opportunity for the inner-city professional or investor.

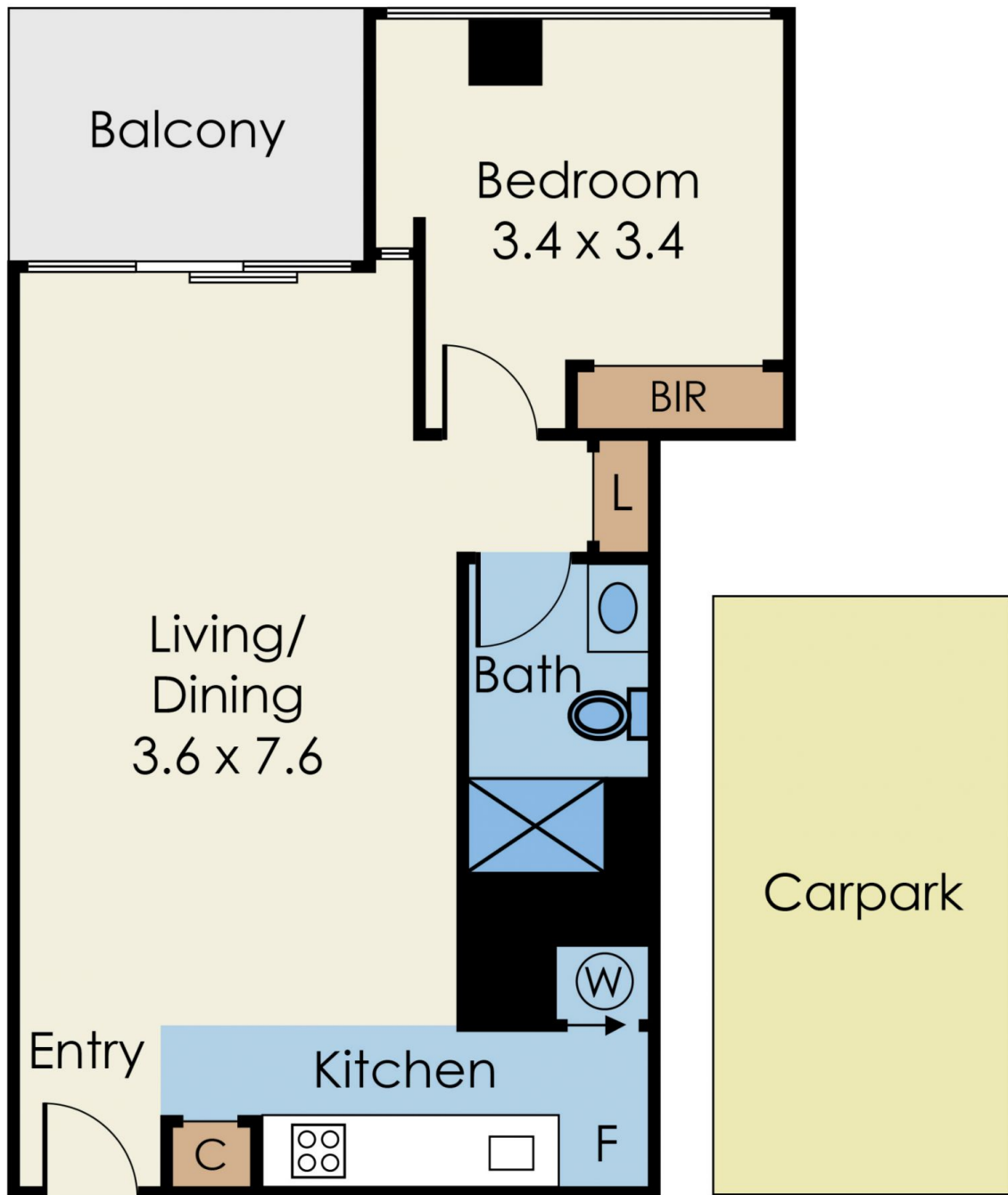
****Generic photos used****

Price : \$ 390,000

View : <https://www.innerrealestate.com.au/sale/vic/inner-city/melbourne/residential/apartment/6138453>



Anthony Cimino
+61 3 9804 5551



Every care has been taken to verify the accuracy of details in this brochure. Prospective purchasers are requested to take such action as is necessary to satisfy themselves of any pertinent matters.