



145/418 St Kilda Road Melbourne VIC

3 2 1

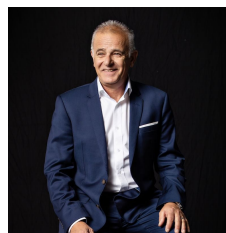
Stroll to The Tan and glide onto trams from this spacious 3-bedroom, 2-bathroom apartment in the award-winning 'The Princeton' at 418 St Kilda Road.

This is arguably one of Melbourne's most coveted tree-lined locations, 2km (approx) to the CBD and walking distance to a smorgasbord of the city's best recreational, cultural, educational and sporting attractions.

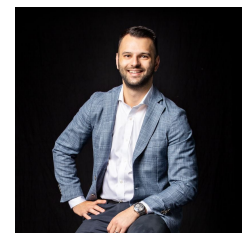
Toorak Rd restaurants and cafes are a hassle-free tram ride away. Stroll around the Royal Botanic Gardens or run a lap of The Tan Track before work. Park the car in the secure car space and catch a tram to the office. The Princeton is close to prestigious schools, Albert Park Lake, the Melbourne Sports and Aquatic Centre and much more. Apartment 145 features crisp, tiled open-plan living and dining and a wall of windows opening onto a refreshing full-length covered balcony with elevated views. Expect nothing less than a deluxe stone and stainless steel kitchen

Price : \$ 810,000

View : <https://www.innerrealestate.com.au/sale/vic/inner-city/melbourne/residential/apartment/6138470>



Joe Cimino



Anthony Cimino
+61 3 9804 5551



ALL INFORMATION CONTAINED HERE IN IS GATHERED FROM SOURCES WE BELIEVE TO BE RELIABLE, HOWEVER WE CANNOT GUARANTEE ITS ACCURACY AND INTERESTED PERSONS SHOULD RELY ON THEIR OWN ENQUIRIES. DIMENSIONS ARE APPROXIMATE.