



INNER REAL ESTATE

NEXTRE

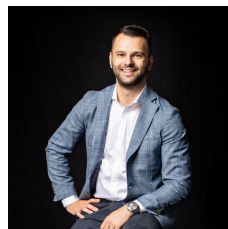


1413/39 Coventry Street Southbank VIC

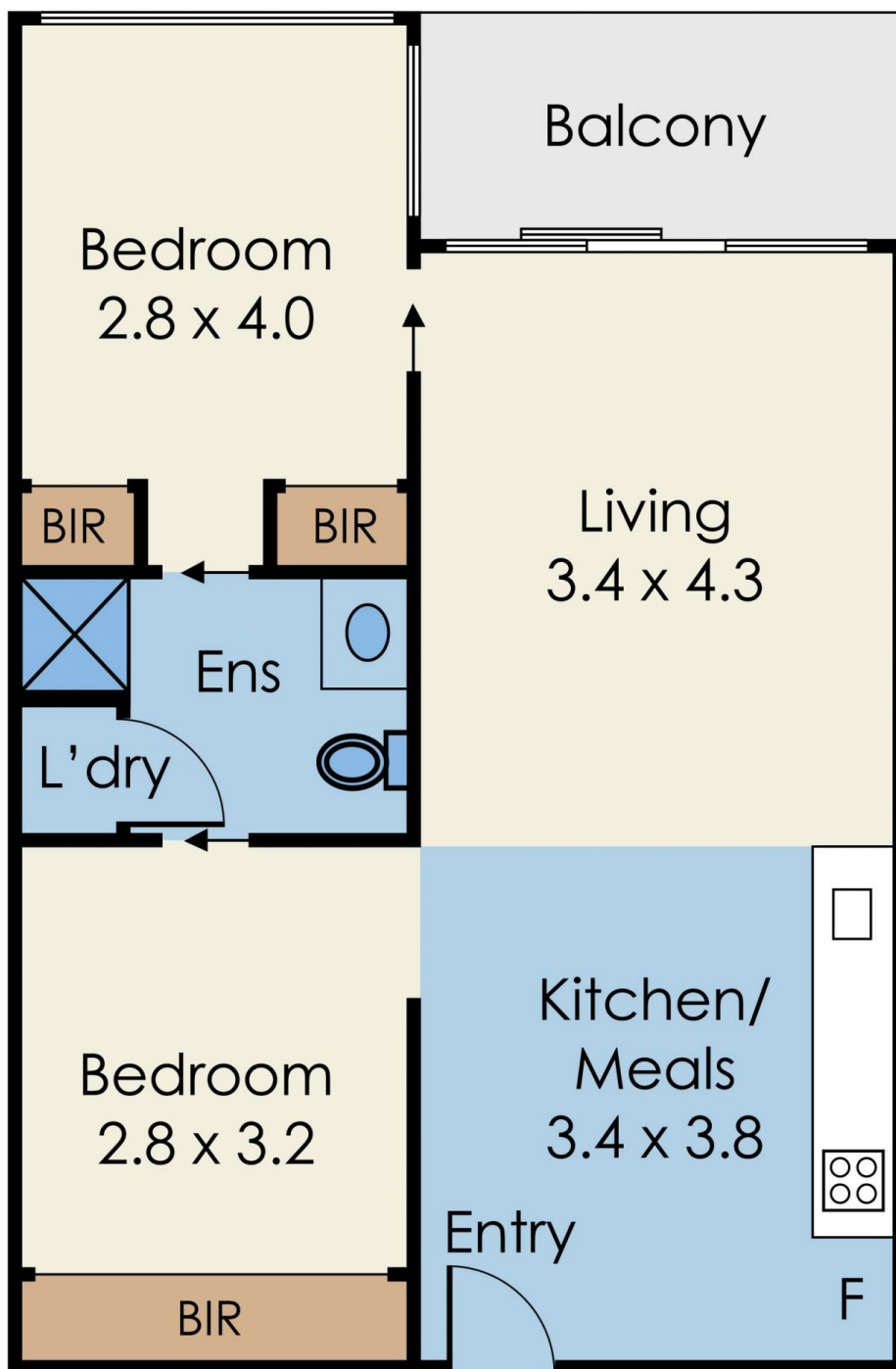
2 1

Come live in this well-designed and neatly laid-out two bedroom apartment that is located in the prestigious Guilfoyle apartments of Southbank - one of Melbourne's hottest enclaves. The modern, open plan kitchen/meals are outfitted with sleek white lacquer cabinetry, slate coloured tiles, stainless steel appliances and stone benchtops. The well-proportioned living room is flooded with incredible sunlight from the floor to ceiling, with direct balcony access, and is large enough to accommodate a small dining area as well. Both bedrooms benefit from built-in-ropes plus adjoin the centralised contemporary bathroom. Highlights include: split-system heating and cooling, onsite recreation opportunities including an indoor pool, bbq facilities and fitness centre. Located in the heart of Southbank, within walking distance to Melbourne's greatest cultural and touristic landmarks: Australian Centre for Contemporary Art, Shrine of Remembrance, Crown Casino, NGV

View : <https://www.innerrealestate.com.au/sale/vic/inner-city/southbank/residential/apartment/6138475>



Anthony Cimino
+61 3 9804 5551



Not to Scale

Every care has been taken to verify the accuracy of details in this brochure. Prospective purchasers are requested to take such action as is necessary to satisfy themselves of any pertinent matters