



202/9 Commercial Road Melbourne VIC

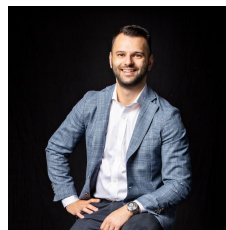
1 1 1

Seize and savour the light-filled elegance of this stunning apartment in the historic Chevron development, nestled between Melbourne's iconic Albert Park and Fawkner Park. There's a hint of Parisian chic, an abundance of natural light and the excitement of owning a slice of real estate with a car space in this commanding location on the corner of St Kilda Road and Commercial Road.

Apartment No.202 is one for the style seeker. A neutral colour palette gives way to a sleek industrial-style monochrome kitchen with stainless steel appliances, a delightful balcony with an outlook over trees and a tranquil bedroom with a built-in robe. A designer bathroom with a walk-in shower and crisp tiling; a Euro laundry; open-plan living and dining with space for a study nook; and an exceptional presentation complete the interior.

The Chevron is, of course, synonymous with city-edge style, offering resort-quality resident amenities including a

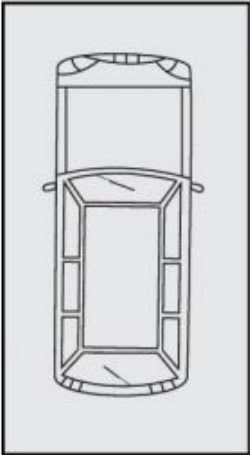
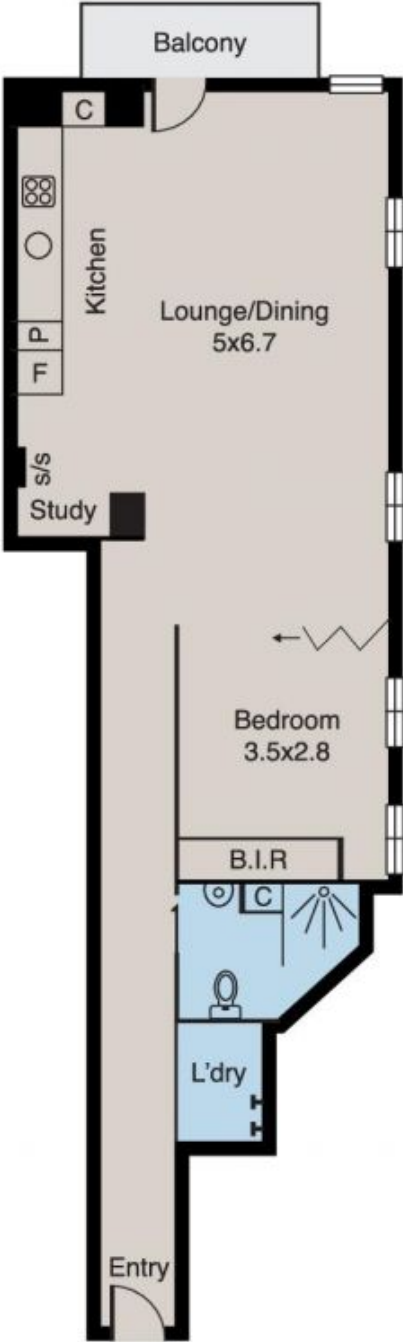
View : <https://www.innerrealestate.com.au/sale/vic/inner-city/melbourne/residential/apartment/6138477>



Anthony Cimino
+61 3 9804 5551

Melbourne

202/9 Commercial Road



Single Car Space
(Not in Position)

ALL INFORMATION CONTAINED HERE IN IS GATHERED FROM SOURCES WE BELIEVE TO BE RELIABLE. HOWEVER WE CANNOT GUARANTEE ITS ACCURACY AND INTERESTED PERSONS SHOULD RELY ON THEIR OWN ENQUIRIES. DIMENSIONS ARE APPROXIMATE.