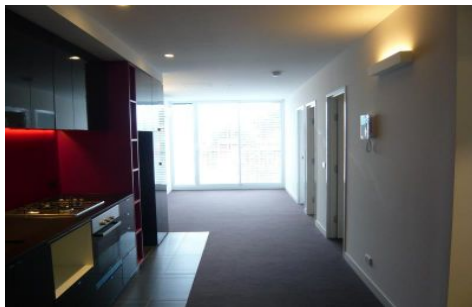




INNER REAL ESTATE

NEXTRE



402/589 Elizabeth Street Melbourne VIC

2  1 

****ARRANGE AN INSPECTION TIME ONLINE - DETAILS BELOW****

View : <https://www.innerrealestate.com.au/lease/vic/inner-city/melbourne/residential/apartment/6138483>

This spacious two bedroom apartment features a sleek central bathroom, contemporary kitchen with plenty cupboard space, colour-matched dishwasher, European laundry, open plan living/dining and carpet throughout. Split-system air-conditioning and NBN are also installed.

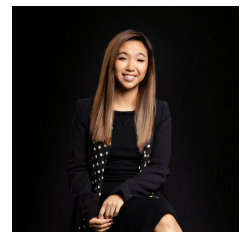
Arranging an inspection is simple!

To book a time to inspect or register to attend, simply click on Book an Inspection Time or Email Agent to instantly book using our online system.

By registering you will be automatically informed of any updates, changes or cancellations of your appointment.

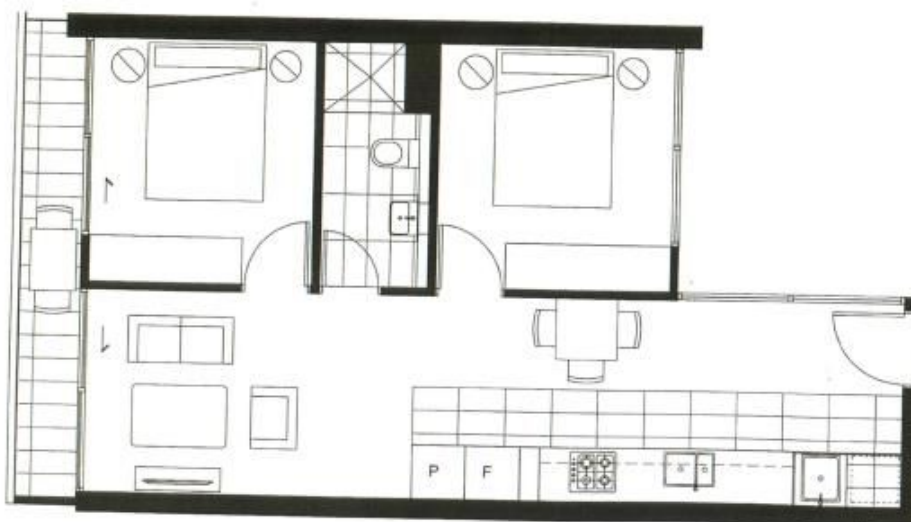


Izabella Frattezi Ramos
0418 511 885



Hayley Tran
+61 3 9804 5551

<https://www.innerrealestate.com.au>



N

Apartment Area:	57.4m ²
Balcony Area:	5.7m ²
Total Apartment Area:	63.1m ²
Bedrooms:	2
Bathrooms:	1
Type:	N, 3.2, 4.2, 5.2, 6.2, 7.2, 8.2, 9.2

Disclaimer: The information depicted is for illustrative purposes only and while believed to be correct at the time of production, should not be relied upon. Prospective purchasers must rely on their own surveys and refer to the plans, reports and conditions contained in the contract of sale.