

**113/130 Dudley Street West Melbourne VIC**

1 1

**\*\*ARRANGE AN INSPECTION TIME ONLINE - DETAILS BELOW\*\***

**View :** <https://www.innerrealestate.com.au/lease/vic/inner-city/west-melbourne/residential/apartment/6138508>

Located on the edge of the Melbourne CBD this apartment is perfect to give you the convenience of the city from a place of tranquility.

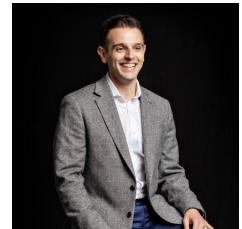
This apartment has a heating and cooling split system, dishwasher, gas cooktop, electrical oven, stylish bathroom, bedroom, combined lounge/dining room with timber floors and balcony.

Located just 200m to the CBD and Queen Victoria Markets, 100 m from Flagstaff Gardens, 400m to North Melbourne and Flagstaff Train Stations.

\* Landscaped Courtyards



**Izabella Frattezi Ramos**  
**0418 511 885**



**Michael Cimino**  
**0400 260 133**