




# INNER REAL ESTATE NEXTRE



**310/148 Wells Street South Melbourne VIC**

**3**  **1**  **1** 

When city-fringe living + distinctive style equals your perfect lifestyle, look no further than this luxurious apartment in The Tower building at 148 Wells Street, South Melbourne.

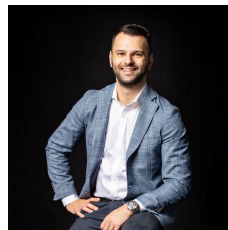
This third-floor domain features 3 bedrooms (or 2 plus a study) with built-in robes, a secure car space and easy breezy open-plan living. Enjoy a tennis court, terrace, garden and pool view from the comfort of your covered balcony and from the adjoining master bedroom. Cheers to sunsets and green open space.

Boasting world-class facilities and supreme city, Southbank and Albert Park access, plus a location on the cusp of Melbourne's famed arts precinct, this is gold.

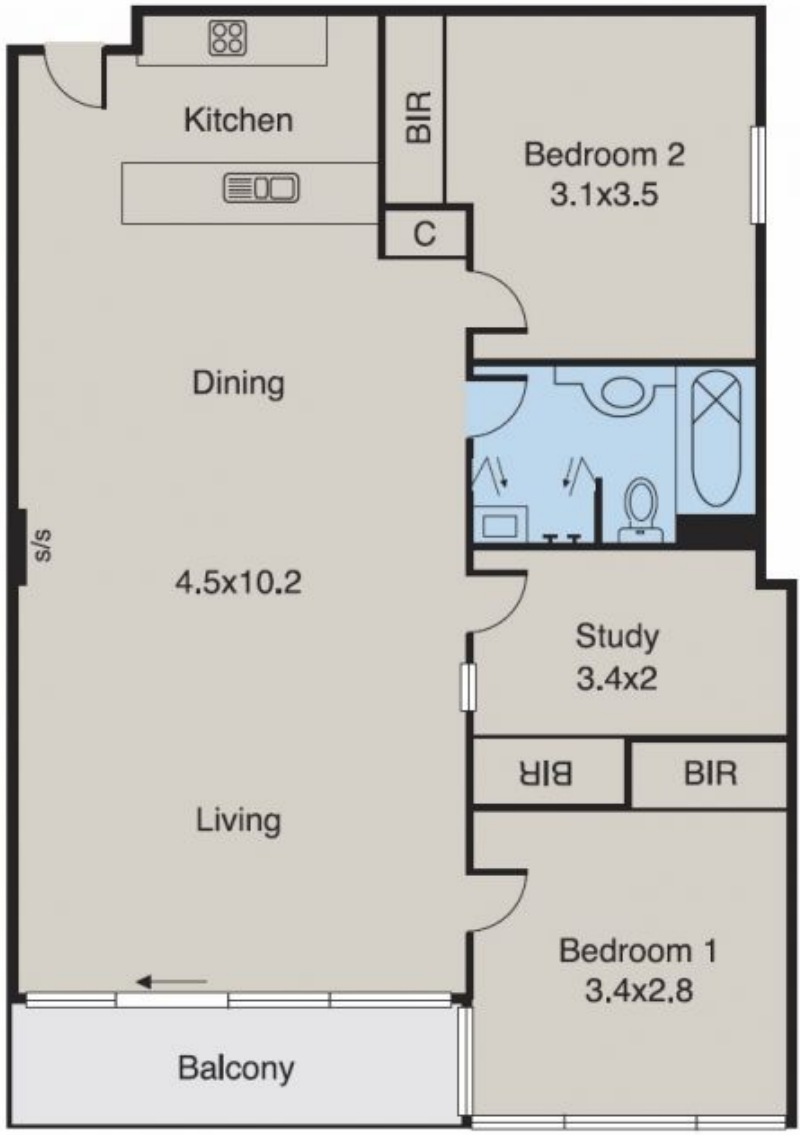
Walk to tram stops, the Royal Botanic Gardens and to the Tan Track for your morning exercise. This is low-maintenance luxury with recreation galore seconds from the front door.

**Building Size** : 95 sqm

**View** : <https://www.innerrealestate.com.au/sale/vic/inner-city/south-melbourne/residential/apartment/6138581>



**Anthony Cimino**  
**+61 3 9804 5551**



Car Space  
(Not in  
Position)