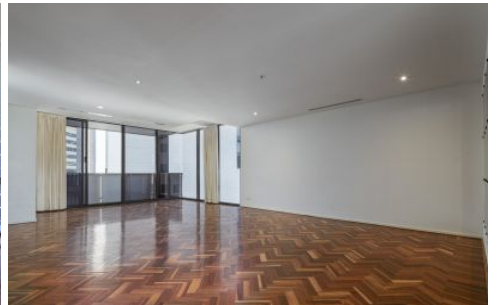







# INNER REAL ESTATE NEXTRE



**1902/28 Wills Street Melbourne VIC**

**3**  **2**  **1** 

### Sky-High City Views and Space

Live a champagne lifestyle in Melbourne's CBD with this exceptional apartment in the desirable Wills Tower, flaunting high-level city views, enviable space and a marble-topped entertainer's kitchen.

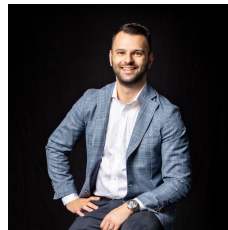
This is privileged living on Level 19 with an access-all-areas address plus a secure basement car park. Amble to Melbourne's iconic Flagstaff Gardens and Queen Victoria Market. Walk to Flagstaff Station, tram stops, cafes, restaurants, the legal precinct and more.

Soak up elevated city views by day and night through floor-to-ceiling windows and spread out in light-filled spaces.

The 3-bedroom, 2-bathroom domain features an endless list of first-class features including parquet flooring, open-plan living, a separate laundry, generous bedrooms with built-in robes, an ensuited master bedroom and ducted

**Price** : \$ 910,000

**View** : <https://www.innerrealestate.com.au/sale/vic/inner-city/melbourne/residential/apartment/6138599>



**Anthony Cimino**  
**+61 3 9804 5551**

Melbourne  
1902/28 Wills Street



Car Space  
(Not in  
Position)

ALL INFORMATION CONTAINED HERE IN IS GATHERED FROM SOURCES WE BELIEVE TO BE RELIABLE. HOWEVER WE CANNOT GUARANTEE ITS ACCURACY AND INTERESTED PERSONS SHOULD RELY ON THEIR OWN ENQUIRIES. DIMENSIONS ARE APPROXIMATE.