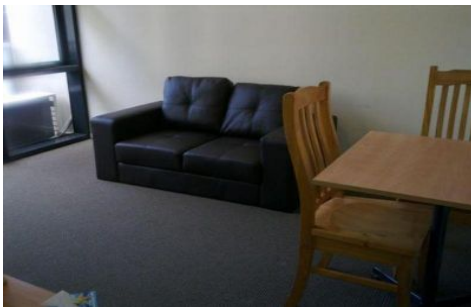




INNER REAL ESTATE NEXTRE



1438/139 Lonsdale Street MELBOURNE VIC

2  1 

****ARRANGE AN INSPECTION TIME ONLINE - DETAILS BELOW****

View : <https://www.innerrealestate.com.au/lease/vic/inner-city/melbourne/residential/apartment/6138603>

Sit on top of the world in this 2 bedroom apartment in the heart of the CBD. Positioned on the 14th floor and fully furnished this apartment has a private balcony capturing stunning city views. open plan living area with a well appointed kitchenette and air-conditioning. This convenient location boasts endless cafes, restaurants and bars, nearby with public transport at your door step and Melbourne Central is also just down the road. An inspections is sure to impress!

Arranging an inspection is simple!
To book a time to inspect or register to attend, simply click on Book an Inspection Time or Email Agent to instantly book using our online system.



Izabella Frattezi Ramos
0418 511 885

<https://www.innerrealestate.com.au>