



# INNER REAL ESTATE

## NEXTRE



**901/568 St Kilda Road Melbourne VIC**

1 1 1

Taking prime position along the timeless and picturesque St Kilda Boulevard is The Rhapsody building.

Designed by renowned Architect Karl Fender the building is located in a most sort after area surrounded by Albert Park Lake, St Kilda beach, The Domain and nearby Chapel St. Step inside this stunning building and be transformed by the impeccable surrounds this building has to offer.

With an a la carte restaurant on the Ground floor this fully featured building includes secure entry / car park, gym and views over Melbourne's landscape.

The apartment itself is located on the ninth level with a prime position over looking St Kilda Rd. The architecturally design interior uses its space very well and incorporates walk through wardrobe, terrace balcony, open plan living and quality kitchen equipped with top quality appliances from

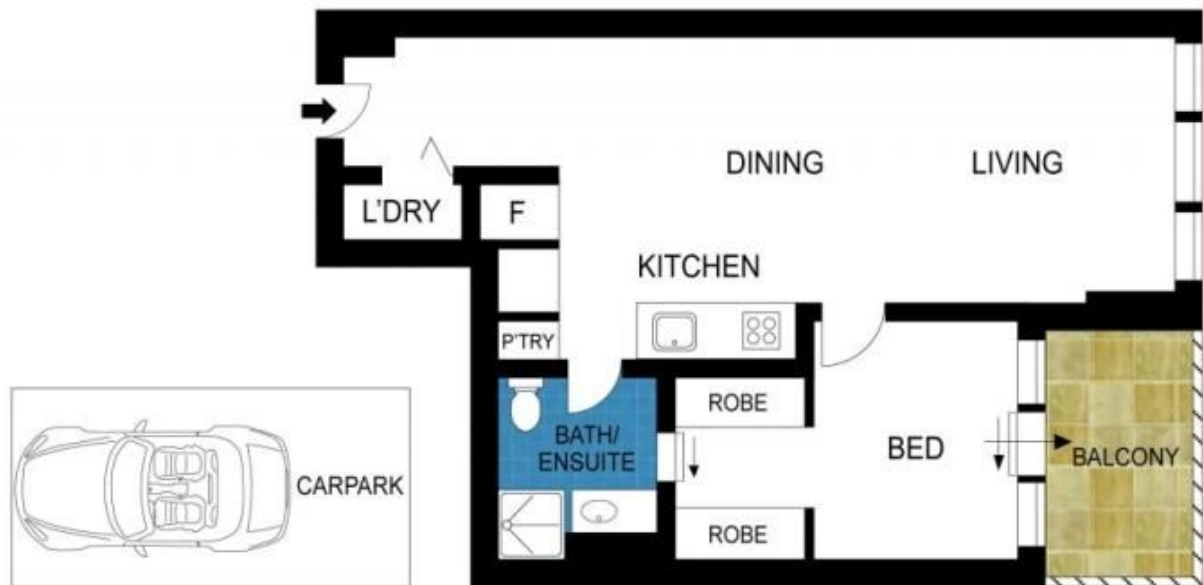
asko along with Caesar stone bench tops.

**View :** <https://www.innerrealestate.com.au/lease/vic/inner-city/melbourne/residential/apartment/6138604>

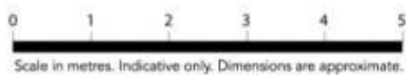


**Izabella Frattezi Ramos**  
**0418 511 885**

<https://www.innerrealestate.com.au>



LEVEL NINE



901/568 St Kilda Road, Melbourne