



INNER REAL ESTATE

NEXTRE



3507/105 Clarendon Street Southbank VIC

2  1 

****ARRANGE AN INSPECTION TIME ONLINE - DETAILS BELOW****

View : <https://www.innerrealestate.com.au/lease/vic/inner-city/southbank/residential/apartment/6138631>

This is your opportunity to secure a Brand New Apartment in the highly coveted Shadow Play complex in the Heart of Melbourne's Entertainment Precinct.

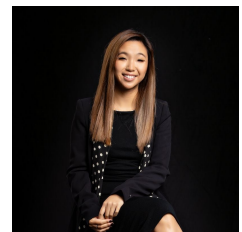
The Apartment includes a functional Kitchen with Smeg appliances and plenty of storage for the discerning home Chef.

Two light filled bedrooms and a central bathroom complete the package within this perfect city pad.

Building itself contains all the must have facilities and much more including:



Izabella Frattezi Ramos
0418 511 885



Hayley Tran
+61 3 9804 5551