



801/181 Exhibition Street Melbourne VIC

2 1 1

This spacious apartment in the iconic Paramount Hotel features a stunning reminder that this is prime Melbourne CBD living, with a view to the unmistakable steps of Parliament House.

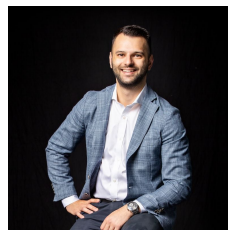
Add to this picture the distinctive spires of St Patrick's Cathedral and the canopy of trees lining Bourke Street and this 2-bedroom domain with a secure car park rockets up the radar for liveability and proximity.

The is inner-city urban central, surrounded by restaurants, cafes, entertainment and retail galore, along with tram stops steps from the Paramount Hotel's impressive front door.

Make it your professional or leisure pad, investment or study base close to iconic theatres, cinemas, shopping precincts, the culinary delights of Chinatown and, of course, the halls of power.

Apartment No 801 is currently leased to the Paramount

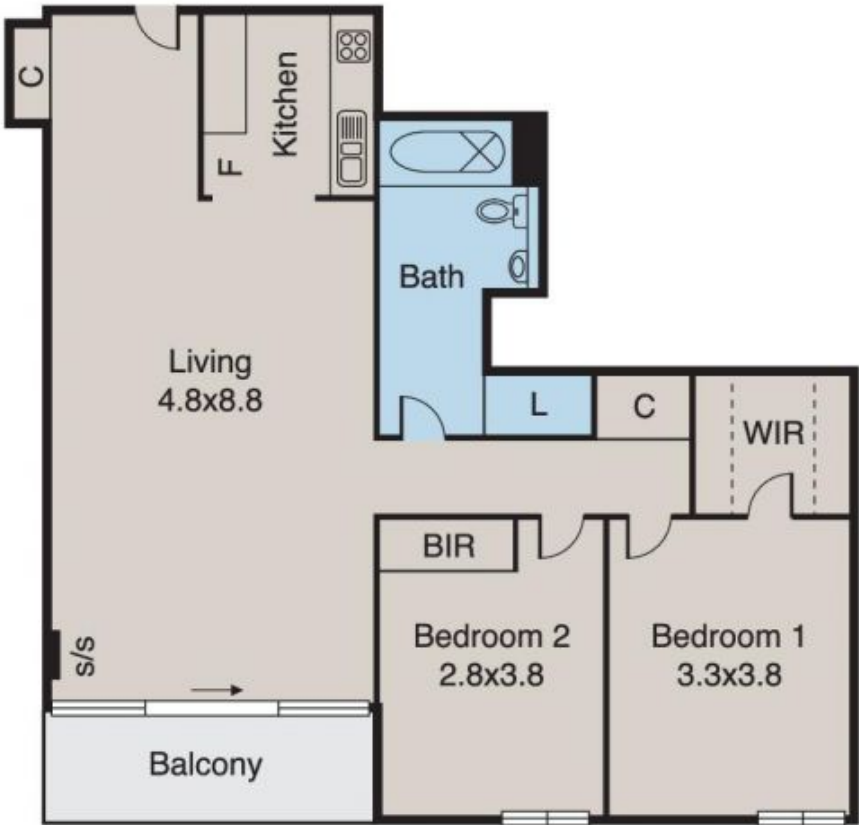
Price : \$ 578,000
Building Size : 86 sqm
View : <https://www.innerrealestate.com.au/sale/vic/inner-city/melbourne/residential/apartment/6138645>



Anthony Cimino
+61 3 9804 5551

Melbourne

801/81 Exhibition Street



ALL INFORMATION CONTAINED HERE IN IS GATHERED FROM SOURCES WE BELIEVE TO BE RELIABLE. HOWEVER WE CANNOT GUARANTEE ITS ACCURACY AND INTERESTED PERSONS SHOULD RELY ON THEIR OWN ENQUIRIES. DIMENSIONS ARE APPROXIMATE.