



INNER REAL ESTATE

NEXTRE



7101/462 Elizabeth Street Melbourne VIC

2  2 

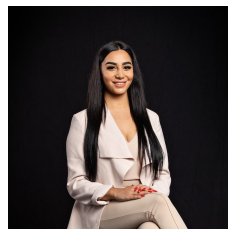
****ARRANGE AN INSPECTION TIME ONLINE - DETAILS BELOW****

Victoria One is finally here and is changing the standard of apartment living in the city. This apartment has been specifically designed and built to service every need of the inner CBD living.

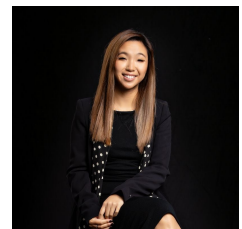
Perched on level 71, this brand new 2 bedroom apartment includes a generous size living room with floor to ceiling windows filled with natural lights and incredibly views throughout the CBD and suburbs. State of the art kitchen, with stone benchtop and stainless-steel appliances. 2 well sized bedrooms filled an abundance of natural light, along with in built wardrobes and bedding fixtures. Completed with designed bathrooms and European laundry.

Residences at Victoria One have access to communal

View : <https://www.innerrealestate.com.au/lease/vic/inner-city/melbourne/residential/apartment/6138708>



Maha Yehia
0448 019 444



Hayley Tran
+61 3 9804 5551

<https://www.innerrealestate.com.au>