



# INNER REAL ESTATE

## NEXTRE



**1208/22 Dorcas Street Southbank VIC**

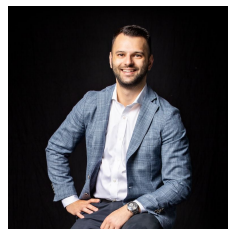
1 1

Blending style and low maintenance functionality, this one-bedroom designer apartment has been tailored for executive living, while returning \$370 per week rent. Set upon Level 12 of the sophisticated Elm complex, it boasts modern sun-filled interiors dressed in premium appointments plus a covered outdoor area. Complemented by exceptional residents' facilities, this superb Southbank abode presents an outstanding opportunity for smart investors and owner-occupiers alike. Ideally located on the fringe of the CBD, footsteps from St Kilda Road trams and the Botanic Gardens, it is also moments from South Melbourne Market, Clarendon Street cafes and Melbourne's arts precinct.

? Open plan living and dining area with a covered Juliet balcony

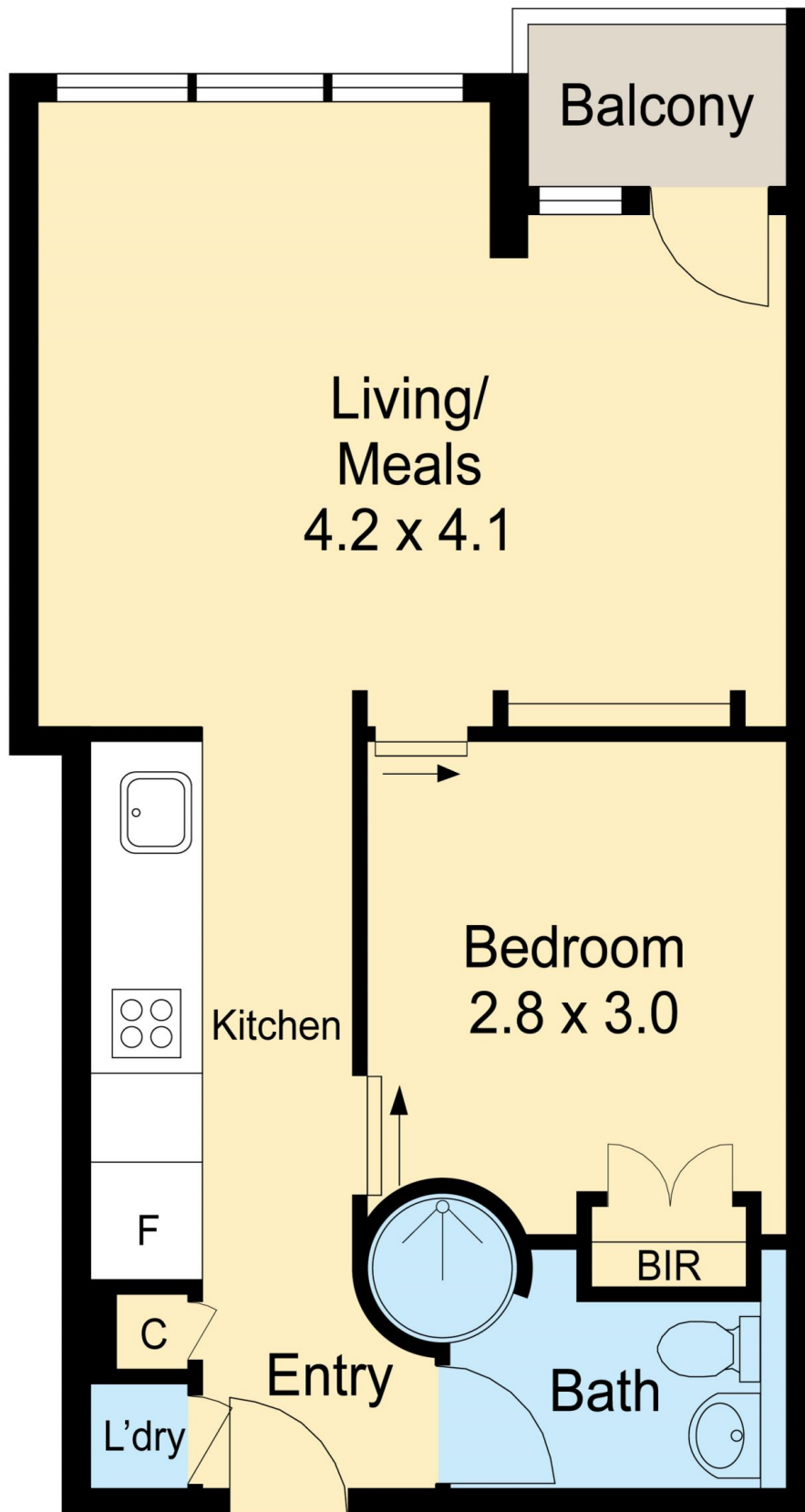
? Far-reaching district views including the CBD and bay glimpses

**View :** <https://www.innerrealestate.com.au/sale/vic/inner-city/southbank/residential/apartment/6138740>



**Anthony Cimino**  
**+61 3 9804 5551**

1208/22 Dorcas Street, SOUTHBANK



ALL INFORMATION CONTAINED HERE IN IS GATHERED FROM SOURCES WE BELIEVE TO BE RELIABLE. HOWEVER WE CANNOT GUARANTEE ITS ACCURACY AND INTERESTED PERSONS SHOULD RELY ON THEIR OWN ENQUIRES. DIMENSTIONS ARE APPROXIMATE.