



# INNER REAL ESTATE NEXTRE



**5/28 Ellesmere Road Windsor VIC**

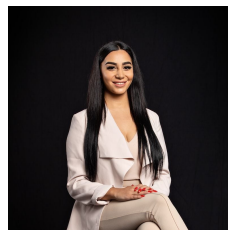
2 1 1

**\*\*ARRANGE AN INSPECTION TIME ONLINE - DETAILS BELOW\*\***

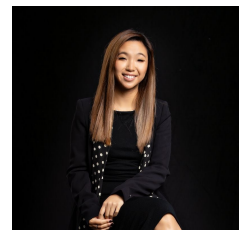
Delightful, airy and ambient, this ground floor two-bedroom art deco inspired apartment invites tenants to experience a lifestyle of convenience, comfort and ease. Ideally positioned just a short walk to Windsor train station for your daily commute, you are just around the corner from Chapel Street's heady mix of retail fun and cosmopolitan cafes - and just a little further to the perennially popular Prahran Market and groovy Greville St.

From an era renowned for its enduring appeal and the added effect of high ceilings and beautiful timber-toned floating floors, a timeless design for practical life delivers both a roomy main living room with open fire place, a separate meals area adjacent to the smartly updated kitchen and spacious private courtyard. Here modern

**View :** <https://www.innerrealestate.com.au/lease/vic/inner-city/windsor/residential/apartment/6138753>



**Maha Yehia**  
**0448 019 444**



**Hayley Tran**  
**+61 3 9804 5551**

<https://www.innerrealestate.com.au>