



INNER REAL ESTATE NEXTRE



14 Silvan Avenue Springvale VIC

3 1 1

****ARRANGE AN INSPECTION TIME ONLINE - DETAILS BELOW****

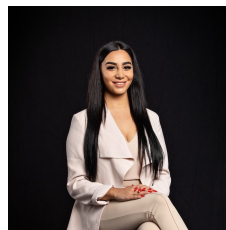
This neat and tidy 3 bedroom family home comprises of spacious lounge area, large kitchen meals area with new appliances, central bathroom with separate toilet, separate laundry and single lock up garage. Also featuring heating, air-conditioning, plenty of storage facilities and back verandah which is great for entertaining. Very close proximity to Springvale Central, Bus stops, Local schools, Monash Freeway and parklands.

Arranging an inspection is simple!

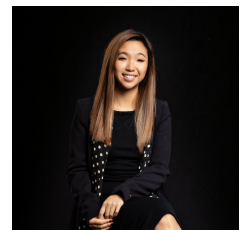
To book a time to inspect or register to attend, simply click on Book an Inspection Time or Email Agent to instantly book using our online system.

By registering you will be automatically informed of any updates, changes or cancellations of your appointment.

View : <https://www.innerrealestate.com.au/lease/vic/south-east/springvale/residential/house/6138764>



Maha Yehia
0448 019 444



Hayley Tran
+61 3 9804 5551