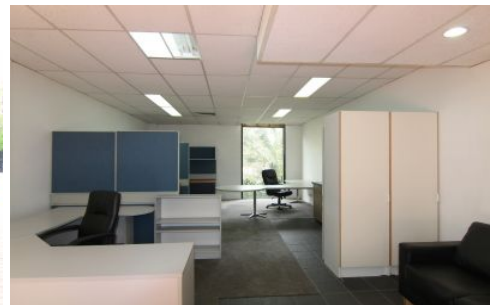




INNER REAL ESTATE

NEXTRE



14/37-39 Albert Road Melbourne VIC

Perfectly positioned ground floor office with loads of natural light. Located only minutes from Melbourne CBD, a short walk to trams on St Kilda Road and easy access to the Westgate and Monash artery.

Features include:

- ? Ground floor in an attractive environment
- ? Starting up or slowing down this suite will suit
- ? Furnished if required
- ? Secure undercover parking
- ? Flexible lease terms
- ? Renowned cafes on Albert Road
- ? Kitchenette

Building Size : 49 sqm

View : <https://www.innerrealestate.com.au/lease/vic/inner-city/melbourne/commercial/offices/6138767>



Joe Cimino