



2207/5 Sutherland Street Melbourne VIC

1 1 2

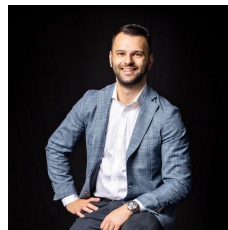
A central, sophisticated address in the heart of one of the world's most liveable cities awaits with this modern apartment in the 'Melbourne Sky' building.

This 1-bedroom Level 22 domain, with \$430 per week rental return, captures a city skyline view over Little Lonsdale Street to Emporium Melbourne, with Southbank's distinctive Arts Centre spire in the distance.

It's walking distance to world-class shopping, cafes, restaurants and tertiary education, and it includes tandem parking for 2 cars. The light-filled interior features an open-plan kitchen, meals and living space that flows onto a full-width balcony with floor-to-ceiling glass. The sleek kitchen includes stainless steel European appliances, a gas cooktop and a glass splashback, and the bedroom features a mirrored built-in robe. Other appointments include a bathroom/laundry and air-conditioning in both the bedroom and living room.

Building Size : 45 sqm

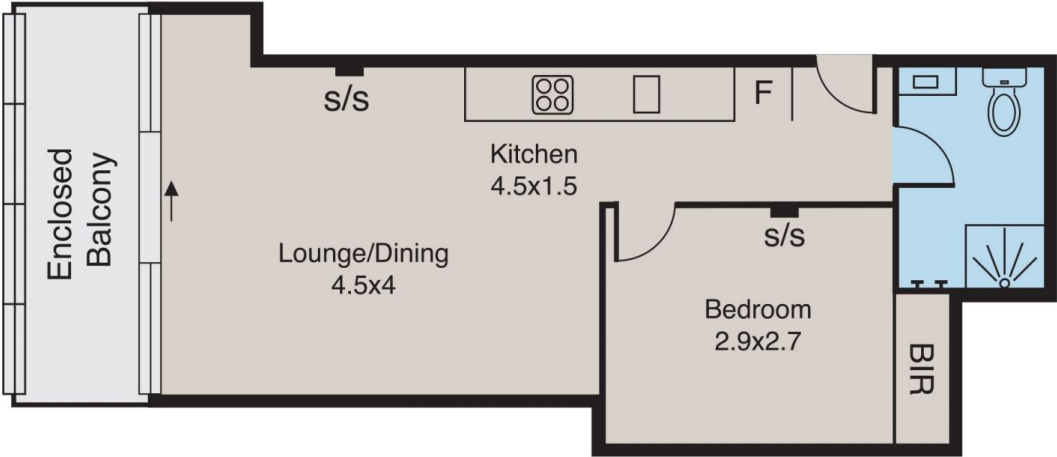
View : <https://www.innerrealestate.com.au/sale/vic/inner-city/melbourne/residential/apartment/6138770>



Anthony Cimino
+61 3 9804 5551

Melbourne

2207/5 Sutherland Street



ALL INFORMATION CONTAINED HERE IN IS GATHERED FROM SOURCES WE BELIEVE TO BE RELIABLE. HOWEVER WE CANNOT GUARANTEE ITS ACCURACY AND INTERESTED PERSONS SHOULD RELY ON THEIR OWN ENQUIRIES. DIMENSIONS ARE APPROXIMATE.