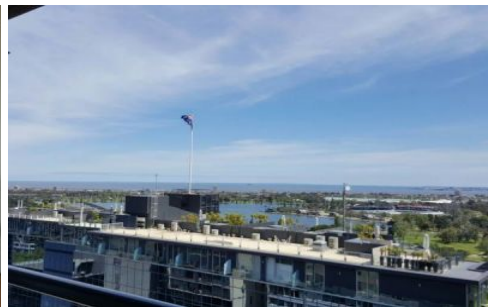




# INNER REAL ESTATE NEXTRE

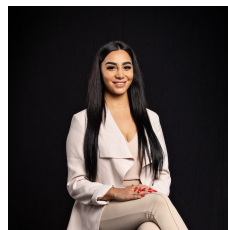


**231/416A St Kilda Road Melbourne VIC**

2 2 1

This impressive top floor 2 bedroom 2 bathroom apartment on St Kilda Road is conveniently located close to the Botanic Gardens and Toorak Road. The apartment features combined living and dining area with reverse cycle AC access to balcony and amazing views, well appointed kitchen with stainless appliances, main bathroom with laundry facilities including a dryer, master bedroom with walk in robe and en-suite. This apartment also comes with one secure car space and lock up storage cage. Recreational facilities include indoor heated pool, gym, sauna, tennis court and BBQ area (all located on level 4)

**View :** <https://www.innerrealestate.com.au/lease/vic/inner-city/melbourne/residential/apartment/6138771>



**Maha Yehia**  
**0448 019 444**

