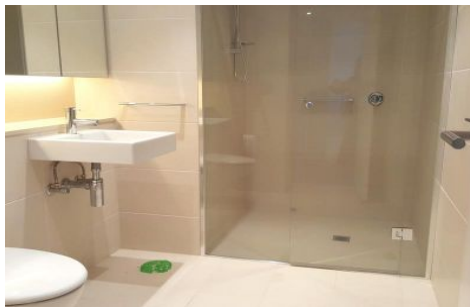
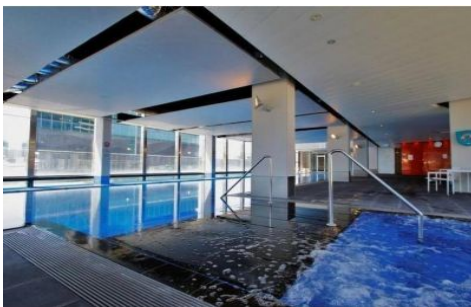




INNER REAL ESTATE NEXTRE



1902/1 Point Park Crescent Docklands VIC

2 2 1

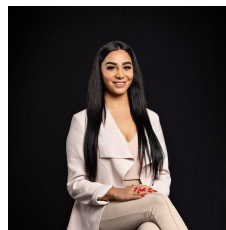
****ARRANGE AN INSPECTION TIME ONLINE - DETAILS BELOW****

Don't miss this furnished 2 bedroom at Yarra Point!!! Situated by one of Melbourne's most exclusive waterfront communities, north-facing banks of the Yarra River, it is vibrant by day and breathtaking by night.

Comprises a vast open plan living area, adjacent host style kitchen with Miele appliances. Two generously proportioned bedrooms each with built in wardrobes, the master quarter with a luxurious his and hers en-suite and direct access to the private balcony. The smart floor plan boasts loads of cupboard space and a second central main bathroom plus a separate European laundry.

Further features include central heating and cooling

View : <https://www.innerrealestate.com.au/lease/vic/inner-city/docklands/residential/apartment/6138772>



Maha Yehia
0448 019 444



Izabella Frattezi Ramos
0418 511 885

<https://www.innerrealestate.com.au>

