



INNER REAL ESTATE

NEXTRE



1913/50 Albert Road South Melbourne VIC

1  1 

UNDER OFFER

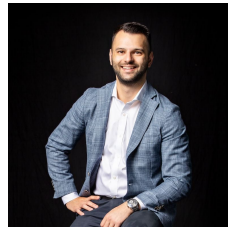
Positioned midway between the iconic Royal Botanic Gardens and Albert Park Lake, this luxury apartment serves up a world-class blend of liveability and accessibility.

The 1-bedroom domain, with \$400 weekly rental, is located on the 19th floor of the prestigious Fifty Albert building, set within one of Melbourne's most prestigious precincts. It captures an elevated view over Kings Way to the canopy of trees that line Albert Park Lake below.

Fifty Albert is walking distance to the Melbourne Sports and Aquatic Centre, The Tan Track, leafy gardens, transport and bustling cafes. A short tram ride delivers residents of this state-of-the-art building to the arts and entertainment heart of Southbank, to the CBD, to South Melbourne Market and beyond to Melbourne's magnificent beaches.

The layout features open-plan kitchen, meals and living

View : <https://www.innerrealestate.com.au/sale/vic/inner-city/south-melbourne/residential/apartment/6138775>

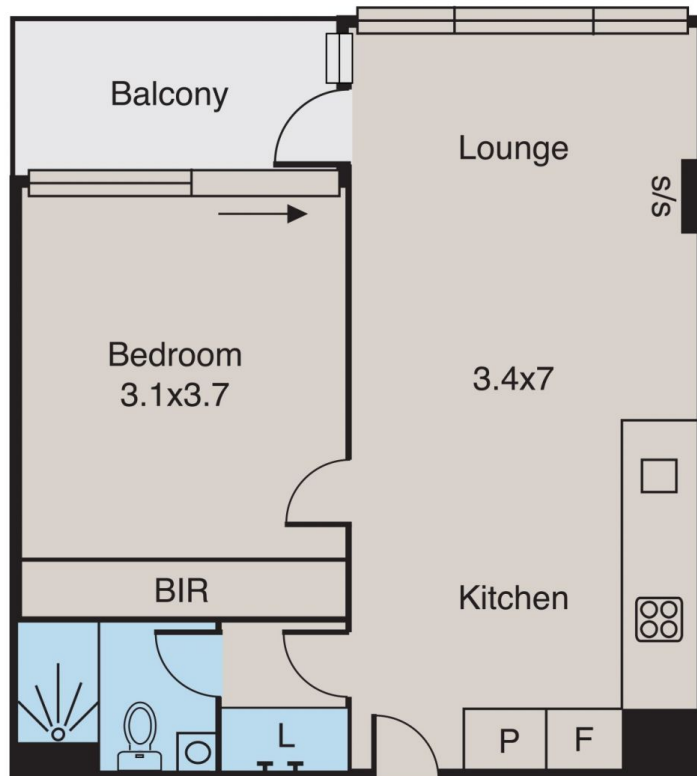


Anthony Cimino
+61 3 9804 5551

<https://www.innerrealestate.com.au>

South Melbourne

1913/50 Albert Road



ALL INFORMATION CONTAINED HERE IN IS GATHERED FROM SOURCES WE BELIEVE TO BE RELIABLE. HOWEVER WE CANNOT GUARANTEE ITS ACCURACY AND INTERESTED PERSONS SHOULD RELY ON THEIR OWN ENQUIRIES. DIMENSIONS ARE APPROXIMATE.