



### 31 Cafardi Boulevard Keysborough VIC

4 2 2

A premium location opposite parkland and an immaculate presentation unite to perfection with this modern residence in the prized Hidden Grove Estate.

This is an exemplary display of indoor-outdoor living with never-to-be-built-out wetland and recreation outlooks.

The 4-bedroom, 2-bathroom single-level design showcases spacious open-plan living, double bedrooms, stylish bathrooms and a large covered alfresco terrace encased in café blinds.

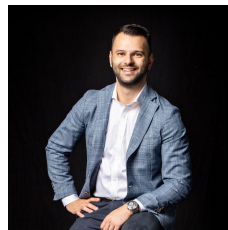
Roll the blinds down to create a cosy outdoor room in winter and up to create summers to remember in the private courtyard.

A low-maintenance 460 sqm (approx) allotment places the focus firmly on lifestyle, while a playground directly opposite enhances the appeal for families.

A barbecue area, walking tracks and birdlife complete this idyllic picture, steps to Sirius College and a 5-minute drive

**Land Size** : 460 sqm

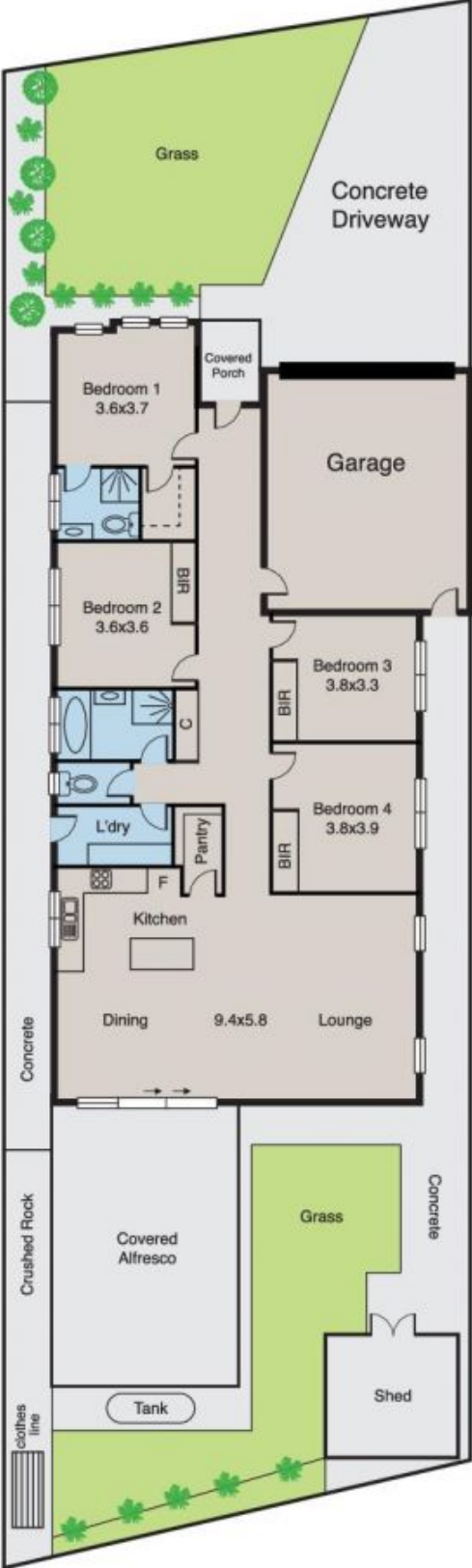
**View** : <https://www.innerrealestate.com.au/sale/vic/south-east/keysborough/residential/house/6138795>



**Anthony Cimino**  
**+61 3 9804 5551**

# Keysborough

31 Cafardi Boulevard



ALL INFORMATION CONTAINED HERE IN IS GATHERED FROM SOURCES WE BELIEVE TO BE RELIABLE. HOWEVER WE CANNOT GUARANTEE ITS ACCURACY AND INTERESTED PERSONS SHOULD RELY ON THEIR OWN ENQUIRIES. DIMENSIONS ARE APPROXIMATE.