



# INNER REAL ESTATE NEXTRE



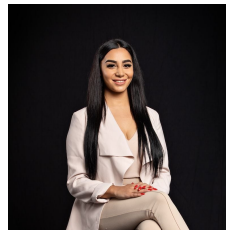
**2418/555 Swanston Street Carlton VIC**

**2  1 **

**\*\*ARRANGE AN INSPECTION TIME ONLINE - DETAILS BELOW\*\***

**View :** <https://www.innerrealestate.com.au/lease/vic/inner-city/carlton/residential/apartment/6138807>

Located conveniently near RMIT, University of Melbourne, Queen Victoria Market and Carlton's picturesque parks and gardens and the CBD, the near new Swanston Square is sure to impress.



**Maha Yehia**  
**0448 019 444**

Offering 2 bedrooms with built in robes, well appointed modern kitchen and living area, Heating and cooling, and glistening central bathroom.

Special features include The Sky Deck, a rooftop oasis with spas, cinema, BBQ facilities and lounge, your living extends beyond your apartment.

Be quick as this apartment will not last long.

**APARTMENT  
TYPE 18**

**5.18**

2 BEDROOMS + 1 BATH

INTERNAL AREA	EXTERNAL AREA	TOTAL AREA
57.4 m <sup>2</sup>	20.7 m <sup>2</sup>	78.1 m <sup>2</sup>

**6.18 – 31.18**

2 BEDROOMS + 1 BATH

INTERNAL AREA	EXTERNAL AREA	TOTAL AREA
57.4 m <sup>2</sup>	5.8 m <sup>2</sup>	63.2 m <sup>2</sup>



**DISCLAIMER**  
The information contained on this plan is believed to be correct, but is not guaranteed. Dimensions and areas are subject to change without notice. Prospective purchasers must rely on their own enquiries and should refer to the plans, terms and conditions contained in the contract of sale. Grant does not take responsibility for the use of this material by others.

