

1404/518 Swanston Street Melbourne VIC

2 2

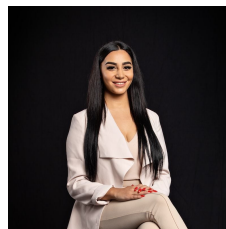
****ARRANGE AN INSPECTION TIME ONLINE - DETAILS BELOW****

This Upper House Apartment is located on the top-end of Swanston Street within walking distance to Melbourne's best cafes, Melbourne University, RMIT, Victoria Market, Major hospitals and transport at your doorstep.

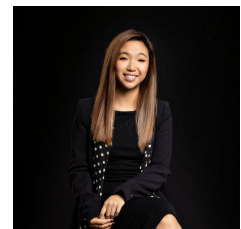
The apartment includes 2 large bedrooms, 2 beautiful bathrooms with European fittings which are complimented by ceramic freestanding basins, limestone floor tiles featuring timber floorboards, dining room and kitchen with quality appliances.

Upper House building also features The Observatory located on level 11. Residents can enjoy a spectacular skyline garden, gymnasium, lounge and expansive CBD views.

View : <https://www.innerrealestate.com.au/lease/vic/inner-city/melbourne/residential/apartment/6138817>



Maha Yehia
0448 019 444



Hayley Tran
+61 3 9804 5551