



4409/35 Queensbridge Street Southbank VIC

2  1 

****ARRANGE AN INSPECTION TIME ONLINE - DETAILS BELOW****

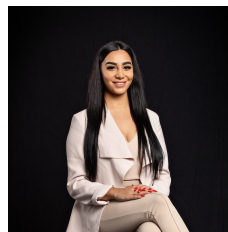
View : <https://www.innerrealestate.com.au/lease/vic/inner-city/southbank/residential/apartment/6138830>

Desirably positioned in the heart of Southbank, only minutes away from some of Melbourne's finest restaurants, Crown Casino, Yarra River and the CBD.

This apartment features two generous sized bedrooms both with built robes, open plan living area with reverse cycle heating/cooling opening onto private balcony with breathtaking views across Melbourne.

Modern kitchen fitted with Miele appliances including dishwasher, stylish bathroom with European laundry, for your convenience the apartment is foxtel and NBN ready.

Building features include Secure entrance with 24 hour Concierge and building security, a virtual golf driving range, 17 seater cinema, fully equipped fitness centre, day spa, indoor pool area with relaxation deck, spa, steam room,



Maha Yehia
0448 019 444



Izabella Frattezi Ramos
0418 511 885