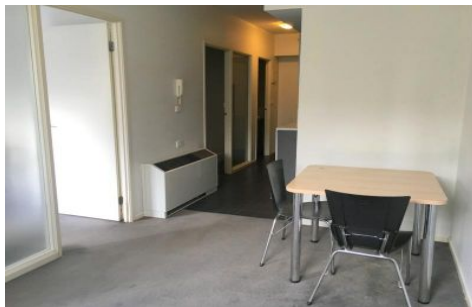
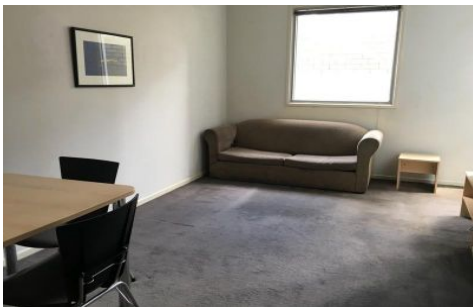




# INNER REAL ESTATE NEXTRE



**807/39 Lonsdale Street Melbourne VIC**

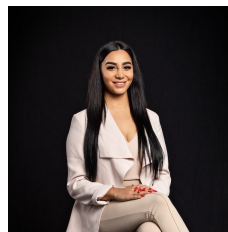
**2  1 **

**\*\*ARRANGE AN INSPECTION TIME ONLINE - DETAILS BELOW\*\***

**View :** <https://www.innerrealestate.com.au/lease/vic/inner-city/melbourne/residential/apartment/6138845>

Positioned in the heart of Melbourne, this two bedroom apartment features open plan living and dining area, BIR's, reverse cycling heating/cooling and modern appliances. Located in the heart of all the theatre precinct, restaurants, bars, cafes and Chinatown, this is the ideal apartment to invest in or owner occupy.

Onsite facilities include: IGA supermarket, common area with table tennis facilities, widescreen T.V, lounges and communal laundry.



**Maha Yehia**  
**0448 019 444**

**TO INSPECT THIS PROPERTY:**  
Register click the "Contact Agent" button and send through

<https://www.innerrealestate.com.au>

