



INNER REAL ESTATE NEXTRE



1705/315 La Trobe Street Melbourne VIC

2  1 

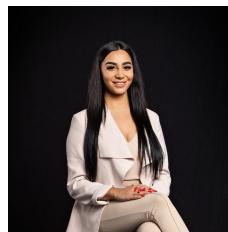
****ARRANGE AN INSPECTION TIME ONLINE - DETAILS BELOW****

View : <https://www.innerrealestate.com.au/lease/vic/inner-city/melbourne/residential/apartment/6138847>

This two bedroom apartment features floor to ceiling windows allowing for maximum natural light and ventilation, creating a vibrant and exciting living space. Property features 2 good size bedroom both with built in robes, quality appliances, stone bench tops to kitchen and beautifully appointed bathroom with laundry.

Residents lounge flowing onto landscaped terraces with city views.

Close to the University of Melbourne, RMIT, QV Shopping Center, Queen Victoria Market, Crown, Chinatown, Melbourne Central, Flagstaff Gardens, Legal precinct, Underground rail loop and trams, Entertainment and theaters, Sporting Arenas, Premium Apartment Stores and



Maha Yehia
0448 019 444



Michael Cimino
0400 260 133