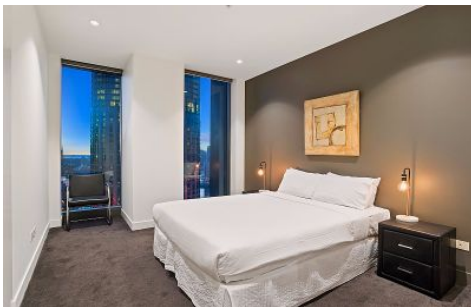




INNER REAL ESTATE NEXTRE



2108/1 Freshwater Place Southbank VIC

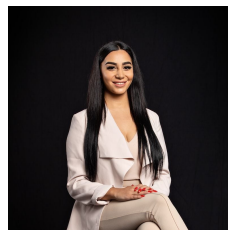
1 1 1

****ARRANGE AN INSPECTION TIME ONLINE - DETAILS BELOW****

View : <https://www.innerrealestate.com.au/lease/vic/inner-city/southbank/residential/apartment/6138849>

This large 1 bedroom apartment is located right in the heart of Southbank, with stunning views of the Yarra River and Melbourne CBD. The apartment consists of a bedroom, a bathroom, built in robes to the bedroom, European laundry, designer kitchen with Smeg stainless steel appliances and ducted heating/air conditioning.

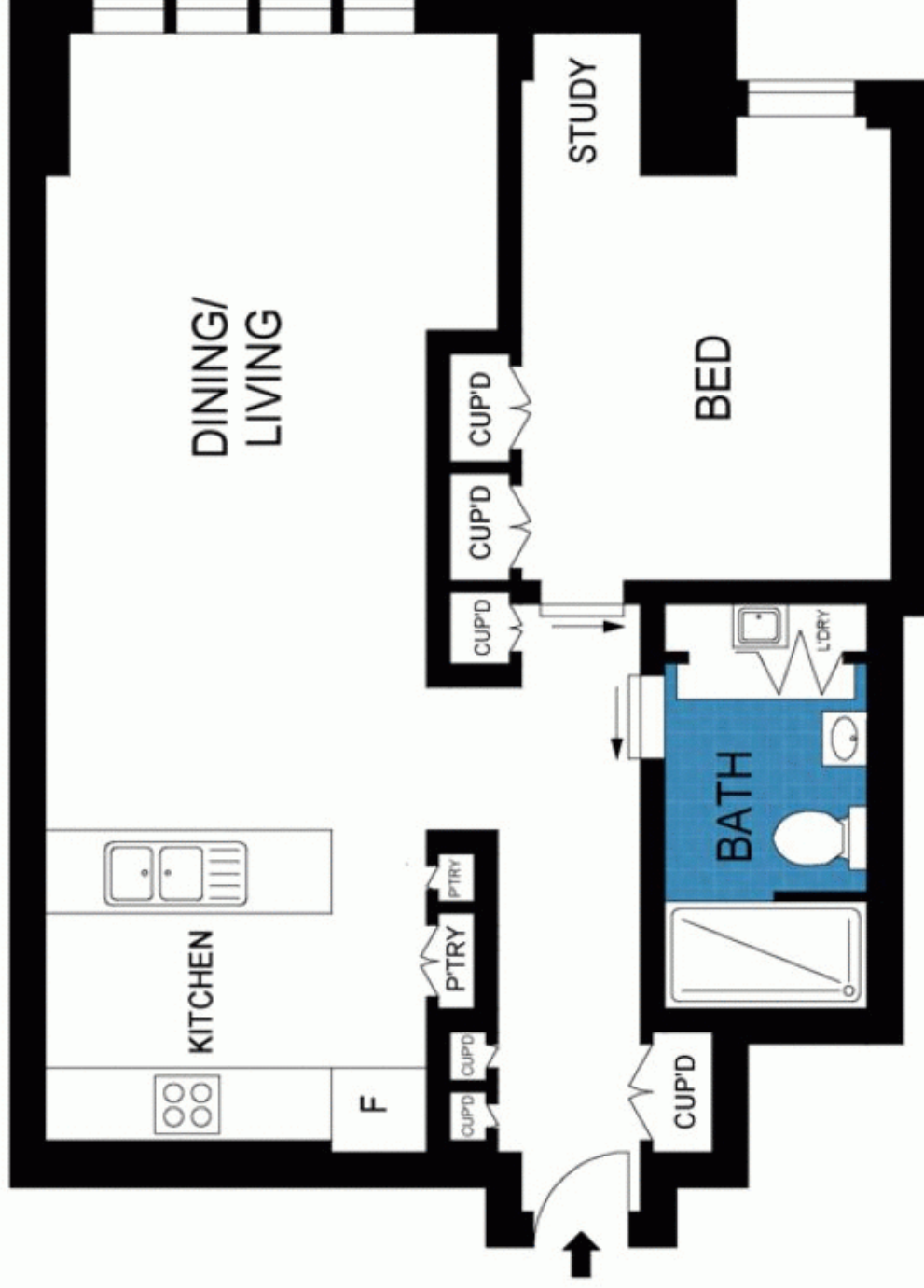
Facilities include: state of the art gym (open 6am to 11pm), change rooms with lockers, showers & WCS, 25 meter indoor/heated pool & spa, sauna & steam room, business centre with kitchen & boardroom perfect for a meeting or function, massage room, terrace/garden area, bbq area on level 10 with stunning views across the Yarra river & city, lift, video security intercom & concierge. An inspection is sure to impress.



Maha Yehia
0448 019 444



Izabella Frattezi Ramos
0418 511 885



LEVEL TWENTY ONE