



4/5 Jellicoe Street Cheltenham VIC

2 1 1

Count the steps to the shops with this modern townhouse featuring a blue-ribbon location doors to Southland Shopping Centre.

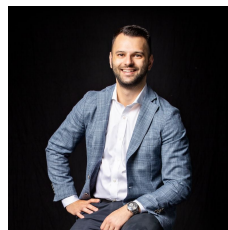
Shop 'til you drop and commute with ease from this private, low-maintenance oasis in one of Cheltenham's most desirable precincts.

Walk to Cheltenham Station and Charman Road's bustling cafe and restaurant scene. It's a hop, skip and a jump to the movies, supermarkets, bus stops, medical facilities and more.

This 2-bedroom domain is nestled at the rear of a boutique development of 5 modern townhouses. Quiet, secure and sparkling, it's an accessible base for style-seekers with the promise of no passing traffic and minimal need for a car.

The layout features an open-plan ground-floor kitchen, living and dining space that spills onto a northerly-facing L-shaped courtyard with an alfresco terrace and a garden

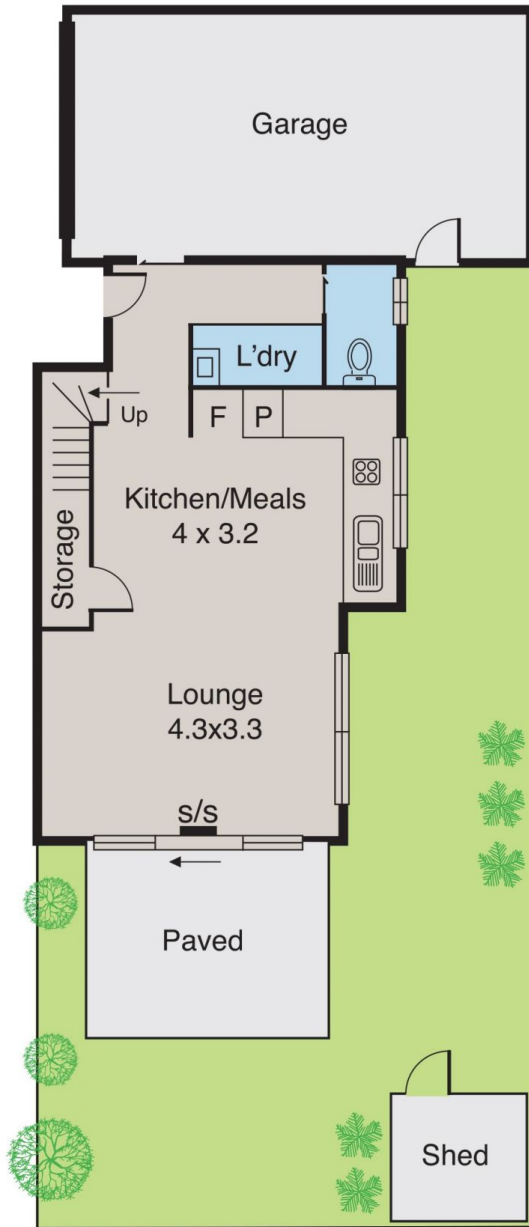
View : <https://www.innerrealestate.com.au/sale/vic/bayside/cheltenham/residential/townhouse/6138851>



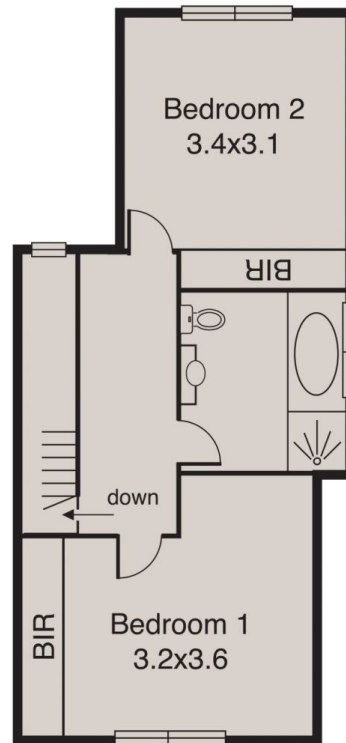
Anthony Cimino
+61 3 9804 5551

Cheltenham

4/5 Jellicoe Street



GROUND FLOOR



FIRST FLOOR

ALL INFORMATION CONTAINED HERE IN IS GATHERED FROM SOURCES WE BELIEVE TO BE RELIABLE. HOWEVER WE CANNOT GUARANTEE ITS ACCURACY AND INTERESTED PERSONS SHOULD RELY ON THEIR OWN ENQUIRIES. DIMENSIONS ARE APPROXIMATE.