



INNER REAL ESTATE NEXTRE



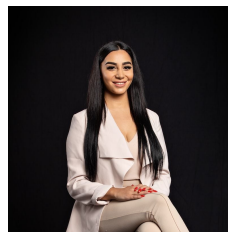
326/268 Flinders Street Melbourne VIC

1 1

****ARRANGE AN INSPECTION TIME ONLINE - DETAILS BELOW****

View : <https://www.innerrealestate.com.au/lease/vic/inner-city/melbourne/residential/apartment/6138857>

Excellent apartment in a superb location with shops, cafes, restaurants and public transport at your door whilst leading educational institutions are all in short walking distance. This studio comes complete with bed, desk, robe, draws, small table setting, functional kitchen including fridge and modern bathroom. The building is secure and features a communal roof top terrace, gym and coin operated laundry. NOTE: Generic photos used.



Maha Yehia
0448 019 444

TO INSPECT THIS PROPERTY:

Register click the "Contact Agent" button and send through an enquiry. One of our friendly team members will contact you once an inspection time is available.

<https://www.innerrealestate.com.au>

