



INNER REAL ESTATE NEXTRE



31 Tomkins Road Port Melbourne VIC

3 3 1

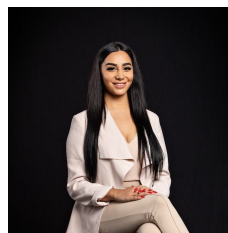
TO INSPECT THIS PROPERTY:

Register click the "Contact Agent" button and send through an enquiry. One of our friendly team members will contact you once an inspection time is available.

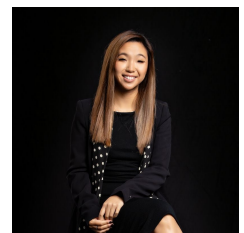
View : <https://www.innerrealestate.com.au/lease/vic/inner-city/port-melbourne/residential/townhouse/6138861>

This brand new beautiful 3 bedrooms features top quality fixtures & fittings throughout. Comprises: private entry to a single locked up garage Master bedroom with en-suite, first floor is an airy open plan large stone bench tops kitchen with stainless steel appliances and floorboards, spacious dining and living areas, second level features 2 double bedrooms both with BIR's one with en-suite, large central bathroom with bathtub and study area.

Additional features include heating/cooling throughout with lots of natural light. Just a short distance to Southank CBD, supermarket, restaurants, schools and shops, Port Melbourne beach and free way.



Maha Yehia
0448 019 444



Hayley Tran
+61 3 9804 5551