



1702/568 St Kilda Road Melbourne VIC

3 🛏 2 🚗 2 🚗

Step into a dazzling lifestyle high above one of Melbourne's most iconic boulevards with this commanding penthouse apartment in the 'Rhapsody' building on St Kilda Road.

This luxury Level 17 sanctuary pairs a panoramic view with a sophisticated city-edge address in a building by renowned international design firm Fender Katsalidis.

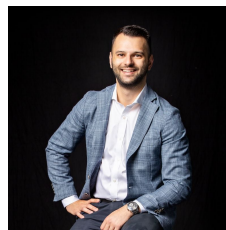
The vista extends as far as the eye can see over St Kilda Road and Wesley College towards The Dandenongs in the east.

The blue of Albert Park Lake and Port Phillip Bay are visible to the south-west, as are the masts at St Kilda Marina and passing cruise ships on the horizon beyond.

This dress circle location is an easy tram ride to the CBD and the arts and entertainment epicentre of Southbank.

Expansive dimensions, window-walled living and an enclosed glazed terrace present a privileged presence in this striking building. It includes 2 secure basement car

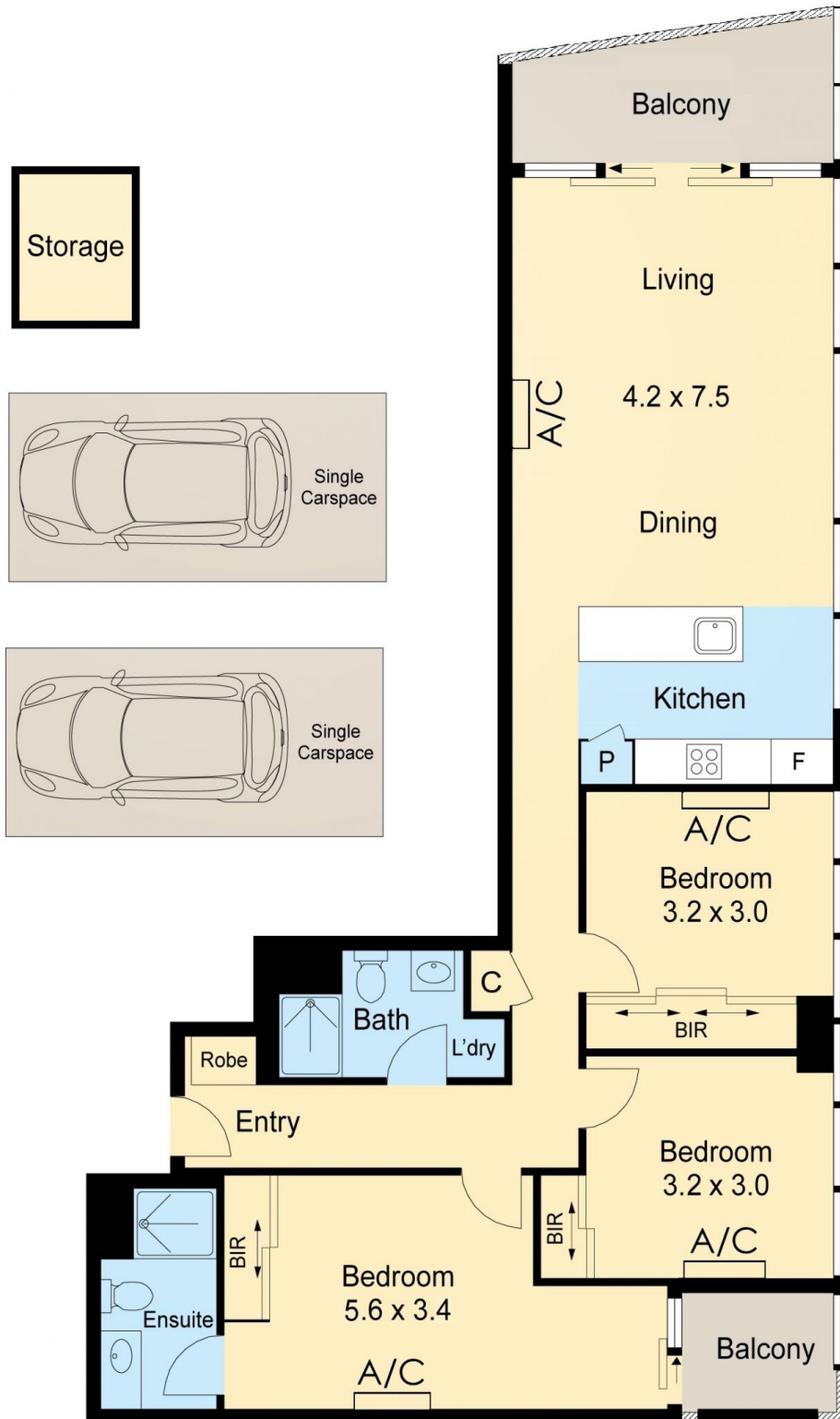
View : <https://www.innerrealestate.com.au/sale/vic/inner-city/melbourne/residential/apartment/6138871>



Anthony Cimino
+61 3 9804 5551



Jonathan Mallas
+61 3 9804 5551



ALL INFORMATION CONTAINED HERE IN IS GATHERED FROM SOURCES WE BELIEVE TO BE RELIABLE. HOWEVER WE CANNOT GUARANTEE ITS ACCURACY AND INTERESTED PERSONS SHOULD RELY ON THEIR OWN ENQUIRES. DIMENSIONS ARE APPROXIMATE.