



### 1505/31 A'beckett Street Melbourne VIC

2 1

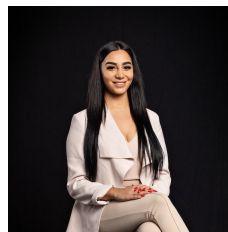
#### TO INSPECT THIS PROPERTY:

Register click the "Contact Agent" button and send through an enquiry. One of our friendly team members will contact you once an inspection time is available.

Located on the 15th floor of the A'Beckett Tower and offering 2 bedrooms with mirrored BIR, this ideal apartment is sure to impress.

Offering open plan living, with split system air conditioning to ensure your comfort no matter the season, well appointed central bathroom and kitchen. The apartment has plenty of natural light and you can enjoy the amazing views of the city skyline from the comfort of your own lounge. This apartment is close to anything and everything you could desire, with cafe's, restaurants, RMIT & Melbourne Universities, QV and Melbourne Central within

**View :** <https://www.innerrealestate.com.au/lease/vic/inner-city/melbourne/residential/apartment/6138901>

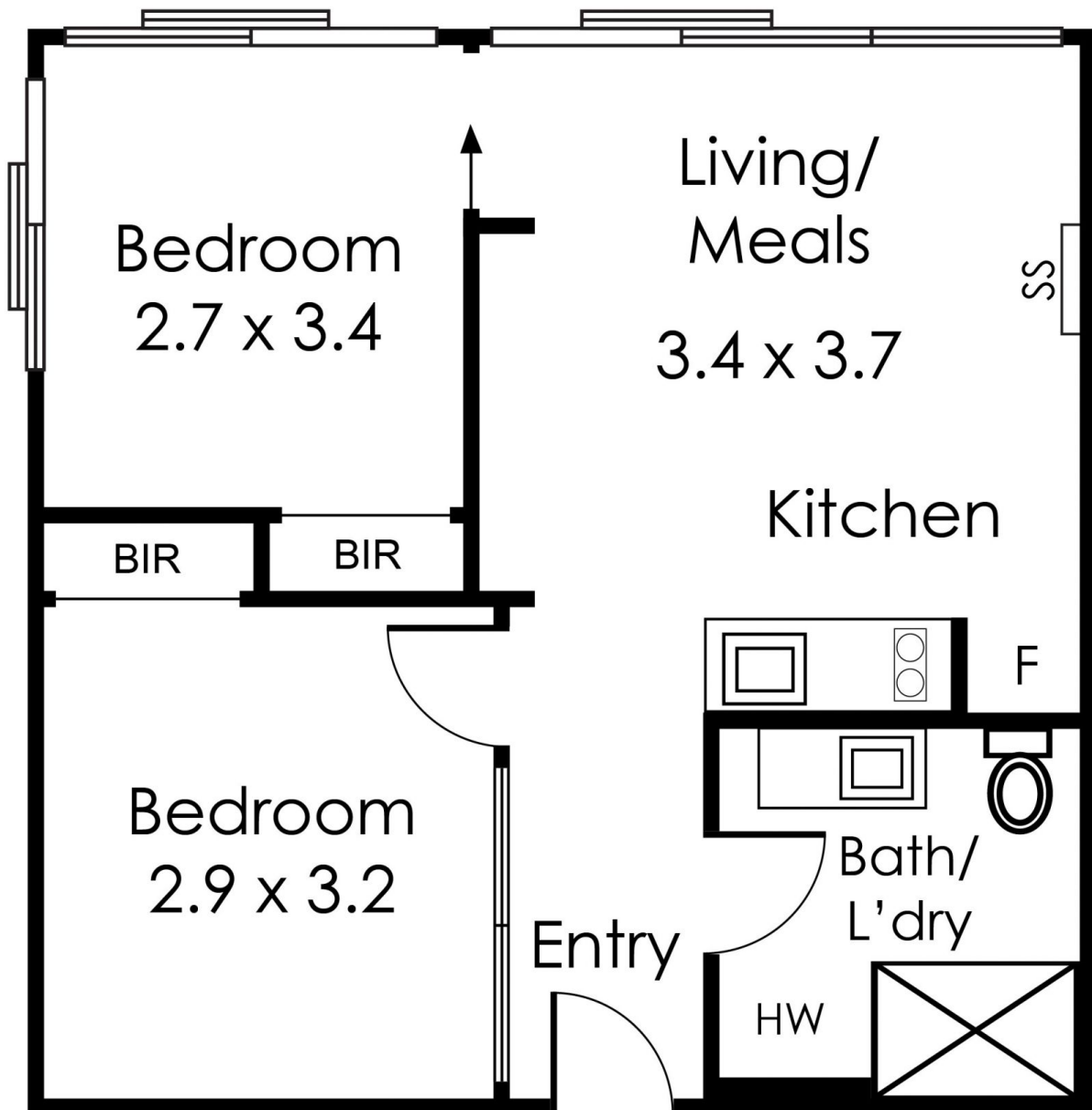
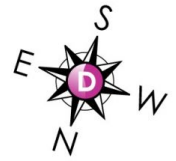


**Maha Yehia**  
0448 019 444



**Hayley Tran**  
+61 3 9804 5551

# 1505/31A Beckett Street, Melbourne



Not to Scale

Every care has been taken to verify the accuracy of details in this brochure. Prospective purchasers are requested to take such action as is necessary to satisfy themselves of any pertinent matters