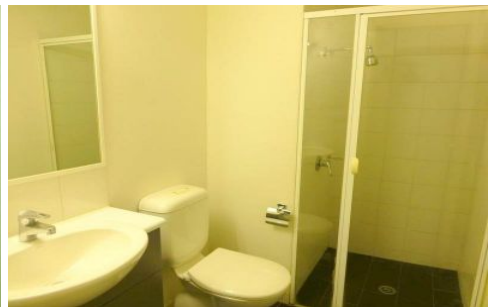




INNER REAL ESTATE NEXTRE



205/39 Lonsdale Street Melbourne VIC

2 1

TO INSPECT THIS PROPERTY:

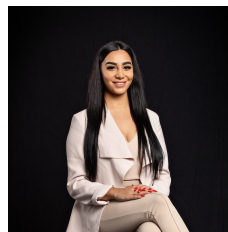
Register click the "Contact Agent" button and send through an enquiry. One of our friendly team members will contact you once an inspection time is available.

View : <https://www.innerrealestate.com.au/lease/vic/inner-city/melbourne/residential/apartment/6138913>

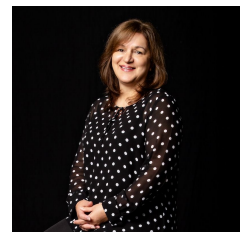
Located on Lonsdale St and surrounded by the business and retail precinct, this modern fully furnished two bedroom apartment has it all.

Featuring an open plan living and dining room with floor-to-ceiling windows, kitchen with ample storage space and stainless steel appliances, 2 bedrooms with built-in wardrobes and a central bathroom.

Amenities include secure intercom access, resident lounge, laundry facilities and building management. within moments to Carlton Gardens, QV, Melbourne Central, theatres, the CBD's famous cafes and restaurants along with easy access to public transport, retail shopping and



Maha Yehia
0448 019 444



Sandra Cimino
0398045551