



3107/180 City Road Southbank VIC

1 1 1

Featuring a soaring elevation in Southbank's sophisticated heart, this modern apartment with Port Phillip Bay and Yarra River views presents premium city-edge living.

This 1-bedroom domain includes a secure car park and is located within the award-winning SouthbankONE building on City Road.

Resort-style facilities pair with a vista stretching from the bay to the CBD - an ever-changing outlook over Melbourne's unique landscape.

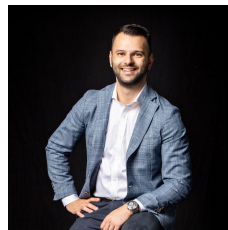
Gaze over the Crown Casino and Entertainment Complex to Crowne Plaza and South Wharf, backdropped by the West Gate Bridge and the Bolte Bridge in the distance.

Walk to Southbank Promenade, riverside dining and shopping, the Arts Centre, the Royal Botanic Gardens, the CBD, Flinders Street Station, tram stops and much more.

The open-plan design features a stone-topped kitchen with a breakfast bar and stainless steel appliances including a

Building Size : 52 sqm

View : <https://www.innerrealestate.com.au/sale/vic/inner-city/southbank/residential/apartment/6138919>



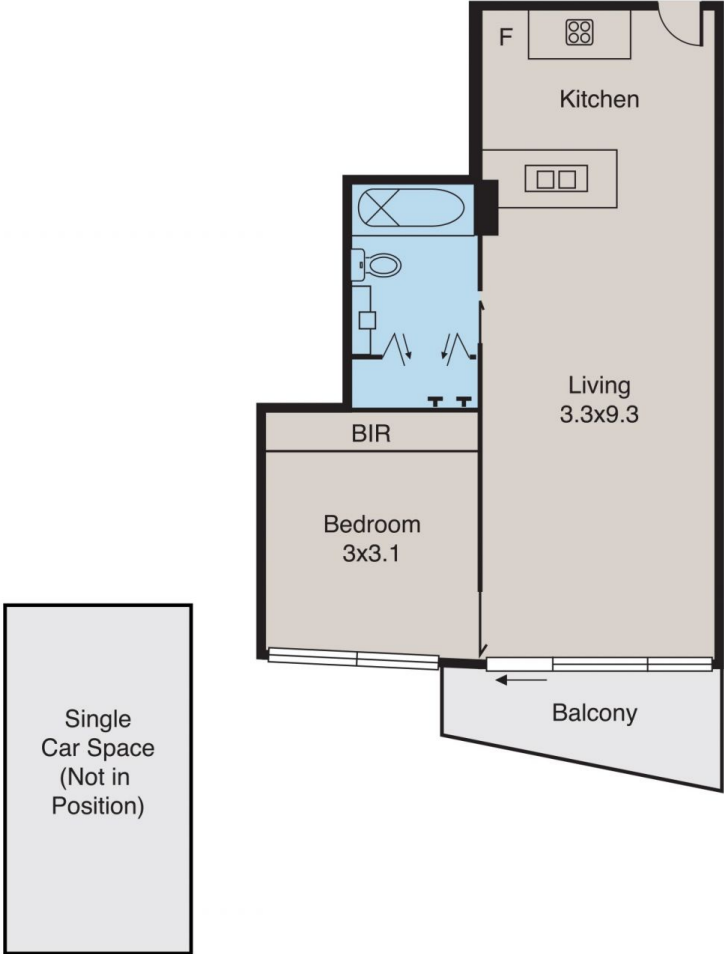
Anthony Cimino
+61 3 9804 5551



Jonathan Mallas
+61 3 9804 5551

Southbank

3107/180 City Road



ALL INFORMATION CONTAINED HERE IN IS GATHERED FROM SOURCES WE BELIEVE TO BE RELIABLE. HOWEVER WE CANNOT GUARANTEE ITS ACCURACY AND INTERESTED PERSONS SHOULD RELY ON THEIR OWN ENQUIRIES. DIMENSIONS ARE APPROXIMATE.