



INNER REAL ESTATE NEXTRE



415/268 Flinders Street Melbourne VIC

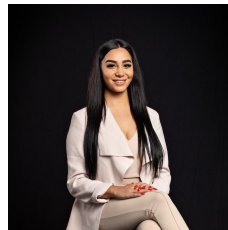


TO INSPECT THIS PROPERTY:

Register click the "Contact Agent" button and send through an enquiry. One of our friendly team members will contact you once an inspection time is available.

It doesn't get any more convenient than this studio with Flinders Street Station, Federation Square, trams, shops and cafes right at your door step. This very affordable studio style apartment features quality kitchen with gas cooking, central bathroom and comes fully furnished. Building features include secure entry, gym, terrace and laundry facilities. An inspection is sure to impress.

View : <https://www.innerrealestate.com.au/lease/vic/inner-city/melbourne/residential/studio/6138928>



Maha Yehia
0448 019 444



Sandra Cimino
0398045551