



B215/8 Grosvenor Street Abbotsford VIC

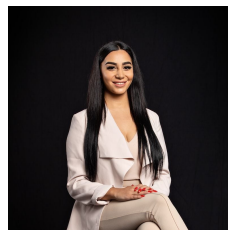
2 1 1

Capturing the essence of inner city cool on the cusp of Richmond, footsteps from Vibrant Victoria Street and the banks of the Yarra River, this stylish designer apartment has been crafted for effortless contemporary living.

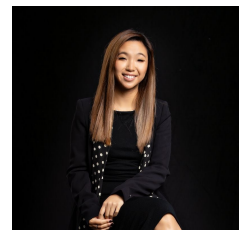
View : <https://www.innerrealestate.com.au/lease/vic/inner-city/abbotsford/residential/apartment/6138932>

Impeccably appointed throughout, it showcases a bright open plan design complemented by premium security and impressive residents' facilities.

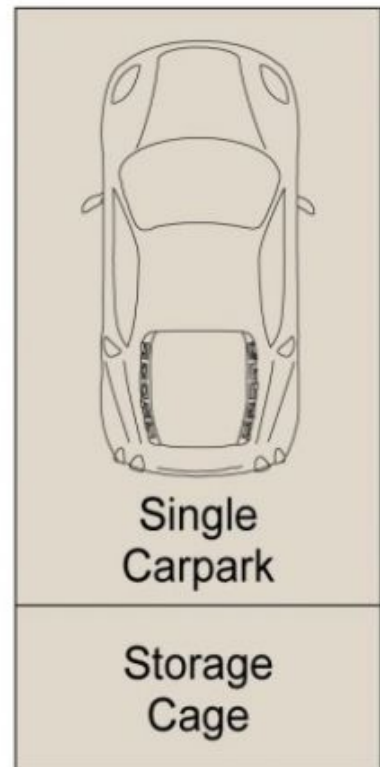
- * Set privately on Level Two of a low-rise security complex
- * Spacious light filled living and dining area, sunny balcony
- * Stunning modern kitchen with stainless steel gas appliances
- * Two double sized bedrooms including mirrored built-in robes
- * Sleek bathroom that has full height tiles and a walk-in shower



Maha Yehia
0448 019 444



Hayley Tran
+61 3 9804 5551



ALL INFORMATION CONTAINED HERE IN IS GATHERED FROM SOURCES WE BELIEVE TO BE RELIABLE. HOWEVER WE CANNOT GUARANTEE ITS ACCURACY AND INTERESTED PERSONS SHOULD RELY ON THEIR OWN ENQUIRES. DIMENSTIONS ARE APPROXIMATE.