



173/418 St Kilda Road Melbourne VIC

3 2 2

A sky-high elevation and generous dimensions present an air of sophistication to match an address of distinction with this deluxe apartment on St Kilda Road.

This 3-bedroom, 2-bathroom domain occupies a prized corner position on Level 17 of The Princeton and includes 2 tandem basement car parks.

Windows from all bedrooms look out to the bay and Albert Park Lake, which views also feature from the full-width covered balcony.

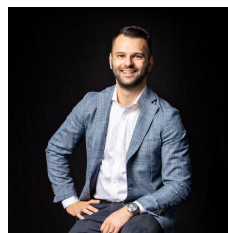
The Princeton places some of Melbourne's most iconic parks and shopping precincts at your fingertips - including Albert Park, Fawkner Park, The Royal Botanic Gardens and Chapel St and Clarendon St shopping strips.

A tram stop opposite makes light work of city commutes and places Southbank's arts and entertainment heart within effortless reach.

The layout features light-filled open-plan living with

Price : \$ 860,000

View : <https://www.innerrealestate.com.au/sale/vic/inner-city/melbourne/residential/apartment/6138934>



Anthony Cimino
+61 3 9804 5551

