

### 2108/285 Latrobe Street Melbourne VIC

1 1

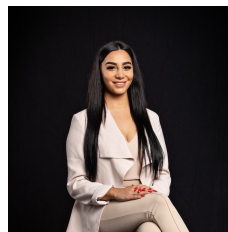
This apartment includes open living spaces filled with natural light and comprises one modern, spacious bedroom with built-in-robe. Open plan kitchen with stainless steel appliances includes a European dishwasher and oven, central air-conditioning, secure lift access and video intercom system.

This apartment is located in the heart of the CBD. You can enjoy the abundance of amenities in the nearby area including the Queen Victoria Market, Melbourne Central, numerous public transport routes and the RMIT and Melbourne Universities.

#### TO INSPECT THIS PROPERTY:

Register click the "Contact Agent" button and send through an enquiry. One of our friendly team members will contact you once an inspection time is available.

**View :** <https://www.innerrealestate.com.au/lease/vic/inner-city/melbourne/residential/apartment/6138936>



**Maha Yehia**  
0448 019 444



**Michael Cimino**  
0400 260 133