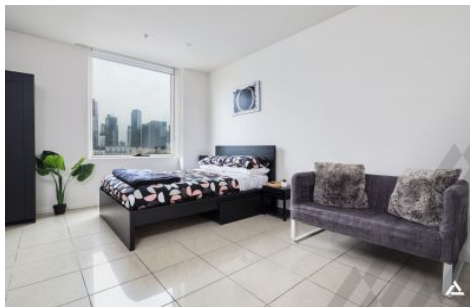




INNER REAL ESTATE NEXTRE

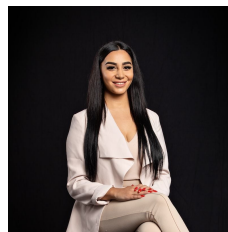


Unit 904/500 Flinders Street Melbourne VIC

1 1

Freshly renovated and fully furnished studio located right in the heart of Melbourne, this New York style city pad has it all without compromising on space. Offering open plan living with tons of natural light from the window overlooking Flinders St and onto Southbank. The studio includes a queen size bed, modern kitchen with quality finishes, two burner electric cook top, oven and plenty of storage space in the kitchen and bedroom. Extra features include washing machine in the apartment, sparkling white bathroom with large shower, and even more cupboard space! Direct access is available up one flight of stairs to the roof top recreation area with seating and BBQ and magnificent views of the Yarra River and Southbank.

View : <https://www.innerrealestate.com.au/lease/vic/inner-city/melbourne/residential/studio/6138957>



Maha Yehia
0448 019 444



Izabella Frattezi Ramos
0418 511 885

Located close to Crown Casino, Flinders Street Station, restaurants, cafes and city shopping, this inner-city apartment is ideal for professionals and one not to be

<https://www.innerrealestate.com.au>