



# INNER REAL ESTATE

## NEXTRE



**118/604 St Kilda Road Melbourne VIC**

1 1

Invest in a serviced apartment of impressive dimensions in a location of distinction with this 1-bedroom domain in Melbourne's Park Regis Griffin Suites, on St Kilda Road.

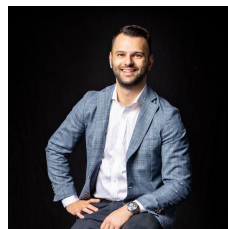
This light-filled Level One sanctuary presents an outstanding opportunity (for investment only) above one of Melbourne's most iconic boulevards - close to the beach, the CBD, Southbank, parkland, shopping, MSAC, the MCG and more.

This is a leisure-inspired address with effortless city convenience, a tram stop opposite and a gross return of \$1800 (approx) per month, leased to Park Regis.

A savvy addition to the portfolio, this places your guests within walking distance of Albert Park Lake - perfect for morning runs and evening strolls - and minutes to Chapel Street, The Royal Botanic Gardens, Fawkner Park and more.

The flowing interior is infused with natural light, courtesy of

**View** : <https://www.innerrealestate.com.au/sale/vic/inner-city/melbourne/residential/apartment/6138961>

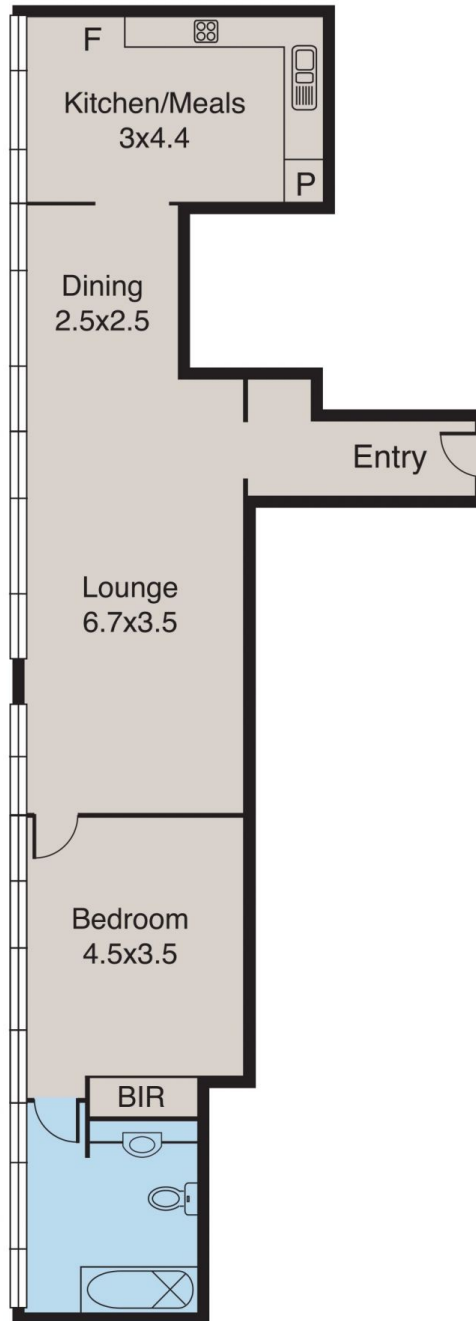


**Anthony Cimino**  
**+61 3 9804 5551**

<https://www.innerrealestate.com.au>

# Melbourne

118/604 St Kilda Road



ALL INFORMATION CONTAINED HERE IN IS GATHERED FROM SOURCES WE BELIEVE TO BE RELIABLE. HOWEVER WE CANNOT GUARANTEE ITS ACCURACY AND INTERESTED PERSONS SHOULD RELY ON THEIR OWN ENQUIRIES. DIMENSIONS ARE APPROXIMATE.