



INNER REAL ESTATE NEXTRE



607/35 Albert Road Melbourne VIC

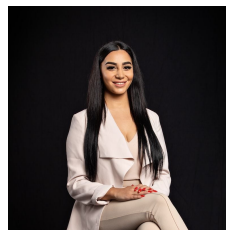
2 2 1

Located in the very chic Emerald building at an ideal location close to trams, Albert Park Lake and the CBD, this two bedroom apartment is sure to impress. It offers an open plan living area and a quality kitchen with Miele appliances installed. The light filled lounge offers floor to ceiling double-glazed windows and leads to a massive balcony.

There are built in wardrobes to the bedrooms and the master bedroom offers a sleek ensuite. Additional features include European laundry, split system heating and cooling, video intercom, a secure car space and a storage cage.

The Emerald offers a grand entrance and access to the roof top with spectacular views to Albert Park Lake and the City.

View : <https://www.innerrealestate.com.au/lease/vic/inner-city/melbourne/residential/apartment/6138976>



Maha Yehia
0448 019 444



Maya Angela
+61 3 9804 5551

